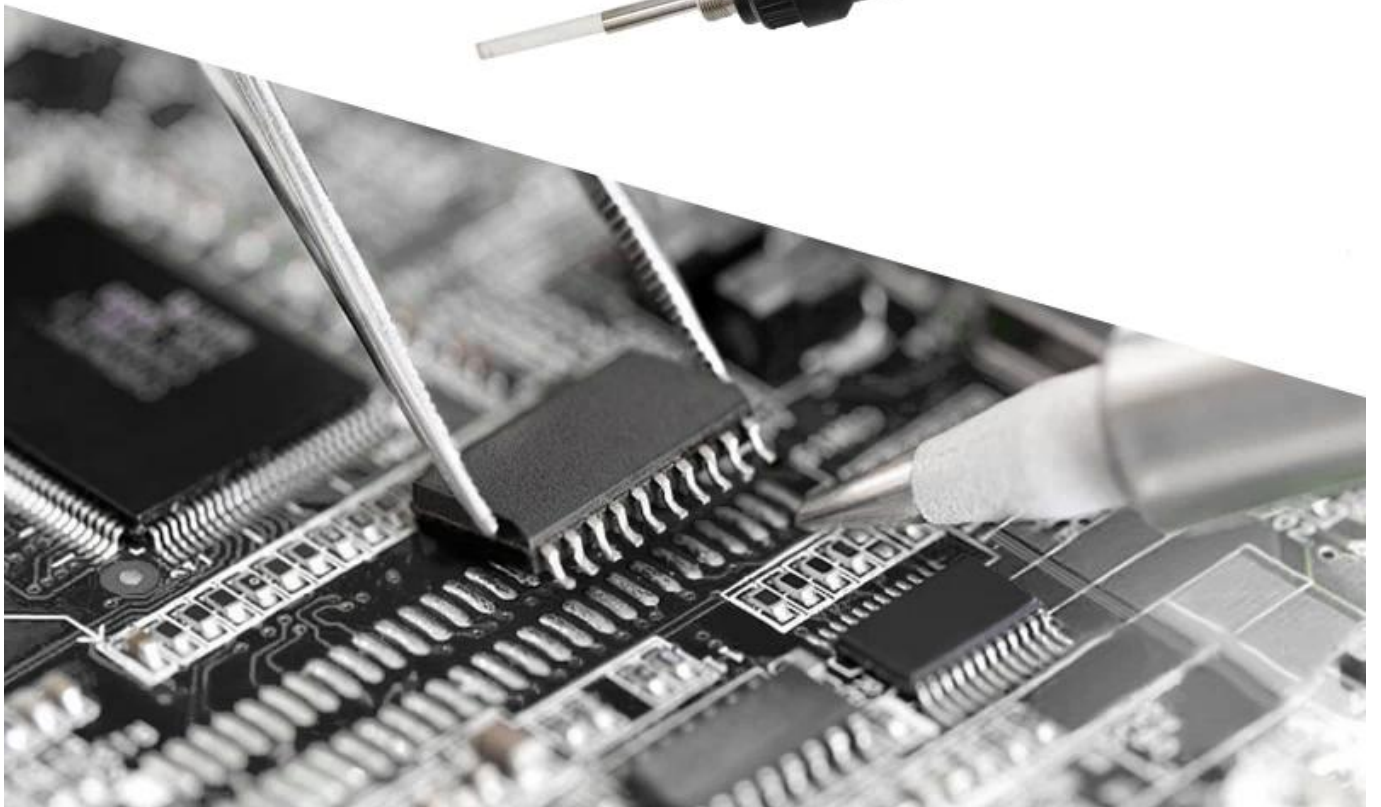


# Solnde





## Four characteristics



Ceramic heating element



Exact temperature

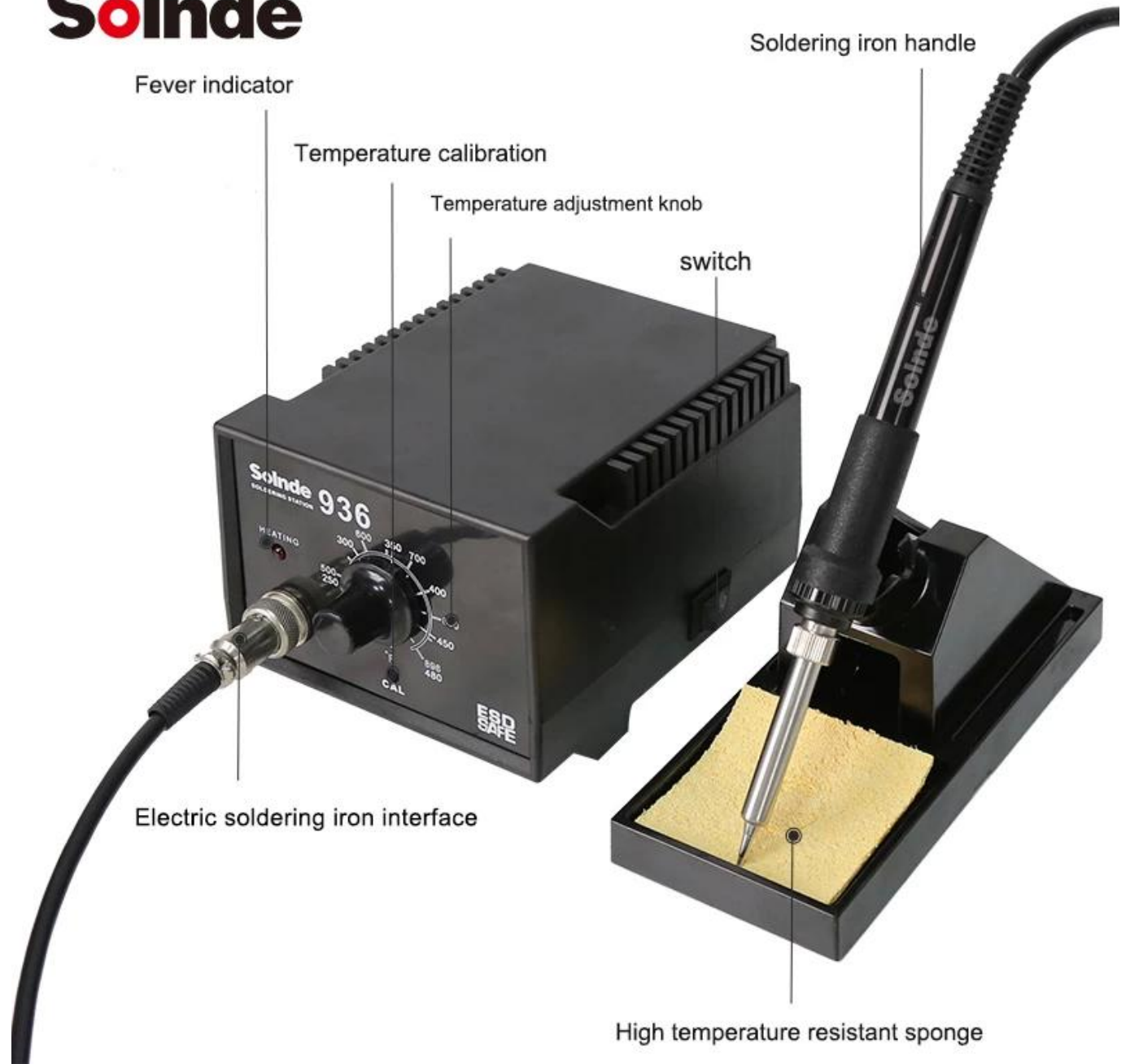


Heat up quickly



Use safety

# Solnde



**Solnde**

Heat up quickly  
Easy soldering





# Product Usage



Model	SLD-936
Power consumption	60W
Body weight	1.95KG
Input power voltage	220VAC $\pm$ 10% 50 HZ
Temperature control range	200-480 ° C / 392 ° F-896 ° F
The output voltage	24VAC
Setting method	Knob adjustment
Welding tip to ground impedance	$<2\Omega$
Welding nozzle to ground voltage	$<5mV$
Temperature stability of soldering iron	$\pm 2^{\circ} C$
Heater	Ceramic heating element
Soldering iron	M-T-I tip

**Solnde**

## High temperature resistant shell

Non-slip thermal insulation silicone protective sleeve



# SolInde



positive



side



bottom



back