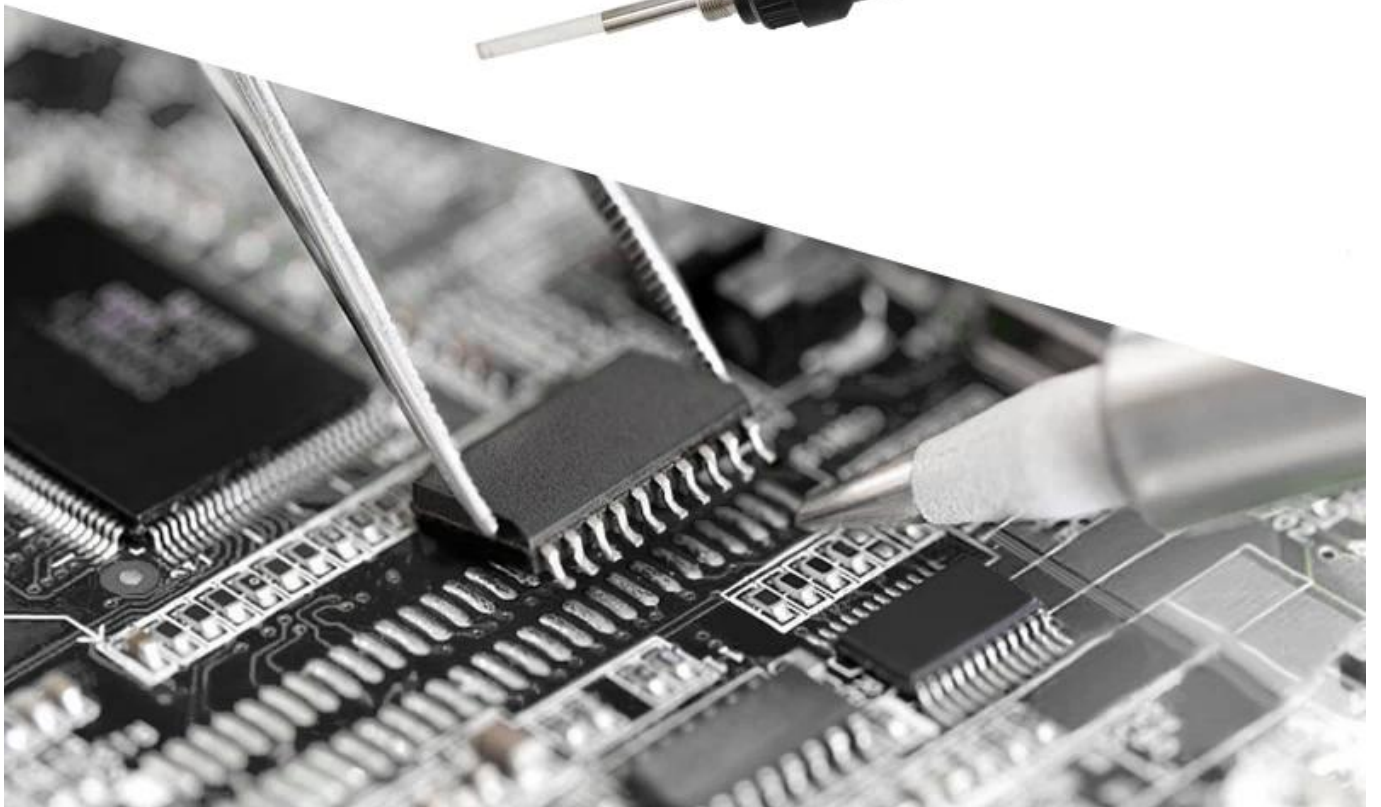


Solnde





Four characteristics



Ceramic heating element



Exact temperature



Heat up quickly



Use safety

Solnde

Soldering iron handle

Fever indicator

Temperature calibration

Temperature adjustment knob

switch



Electric soldering iron interface



High temperature resistant sponge

Solnde

Heat up quickly
Easy soldering





Product Usage



| | |
|---|-------------------------------|
| Model | SLD-936 |
| Power consumption | 60W |
| Body weight | 1.95KG |
| Input power voltage | 220VAC \pm 10% 50 HZ |
| Temperature control range | 200-480 ° C / 392 ° F-896 ° F |
| The output voltage | 24VAC |
| Setting method | Knob adjustment |
| Welding tip to ground impedance | $<2\Omega$ |
| Welding nozzle to ground voltage | $<5mV$ |
| Temperature stability of soldering iron | $\pm 2^{\circ} C$ |
| Heater | Ceramic heating element |
| Soldering iron | M-T-I tip |

Solnde

High temperature resistant shell

Non-slip thermal insulation silicone protective sleeve



SolInde



positive



side



bottom



back