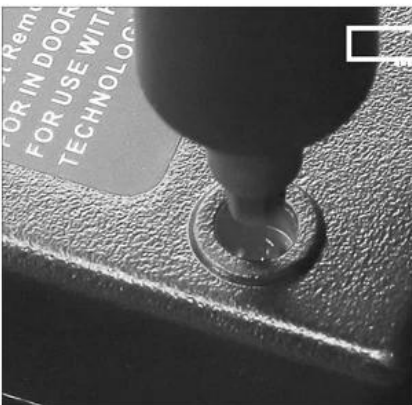


Chave de fenda de potência profissional BST-9911A

Descrição do Produto

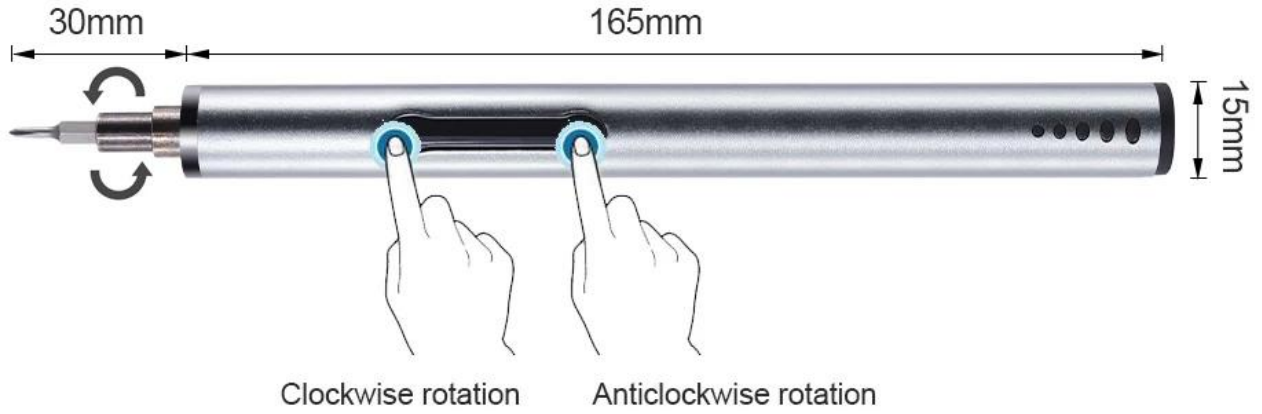
1. alça Alluminum, design antiderrapante facilitar o trabalho de reparação.
2. Alta velocidade, economizar mão de obra, economizar tempo.
3. porta de carga USB, fácil de carregar
4. 6 meses de garantia, não se preocupe com o serviço pós-venda.

Cell phone, computer, glasses, camera,
watch, earphone, radio, meet most daily maintenance



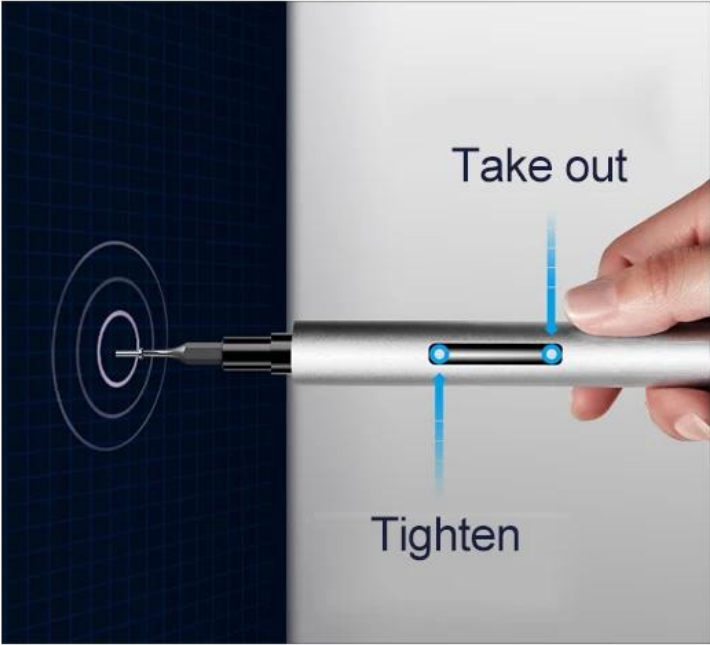
PRODUCT SIZE

Electric screwdriver



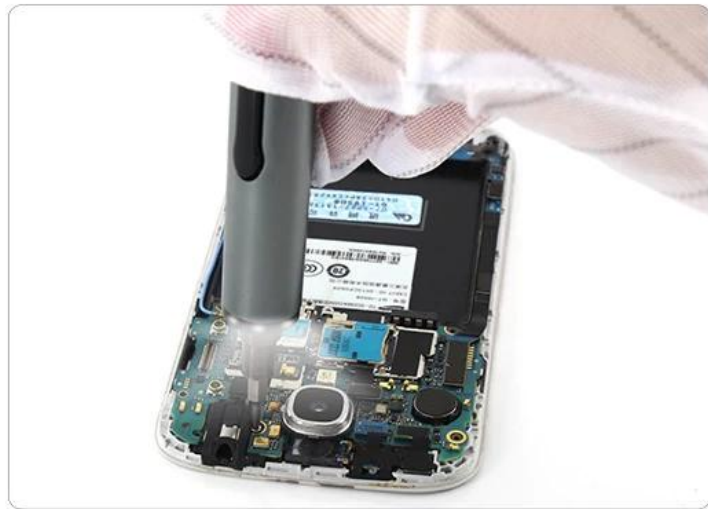
PRODUCT DETAILS







LED lighting during work



⊕	PH000	PH00	PH0	PH1	PH2
⊛	T5	T6	T8		
⊖	1.5	2.0	3.0		
⊙	2.5	3.0			
★	0.8	1.5	1.2		
U	3.0				
Y	2.5				
▲	3.0				
■	SQ0				

Model: 9911A	Weight: 260G	Battery type: lithium battery	Use time: 2-5hour
Product size: 243*75*42MM	Main material: AL	Bit Material: S2	
Accessories: bit X 20, lithium batteryX1 , handle X 1 , Charging Cable X 1			

PRODUCT PACKAGING

