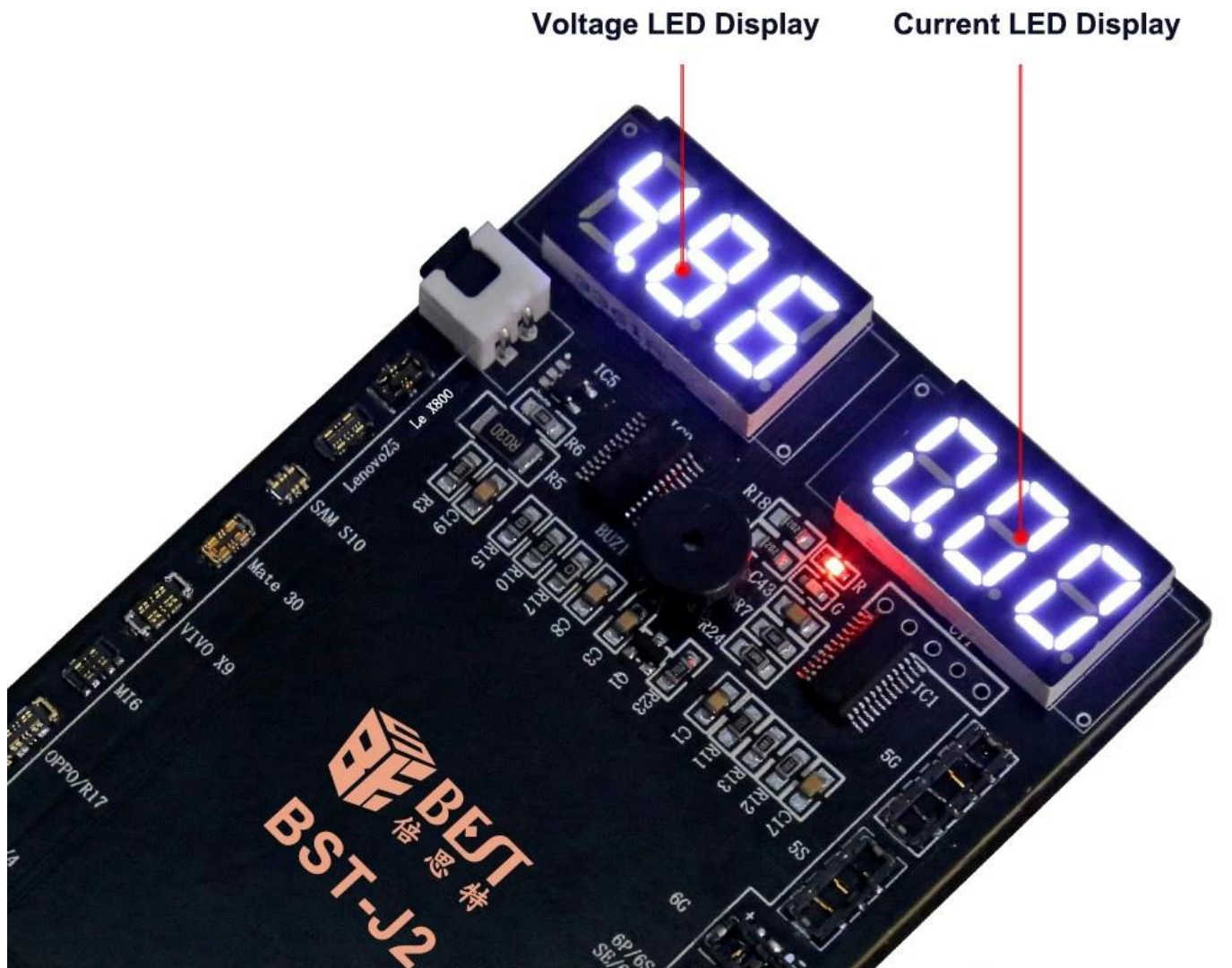


REAL-TIME MONITORING OF CURRENT/VOLTAGE

Accurately monitor the real-time output voltage and current values of the activation board, measure power supply equipment empty/load voltage

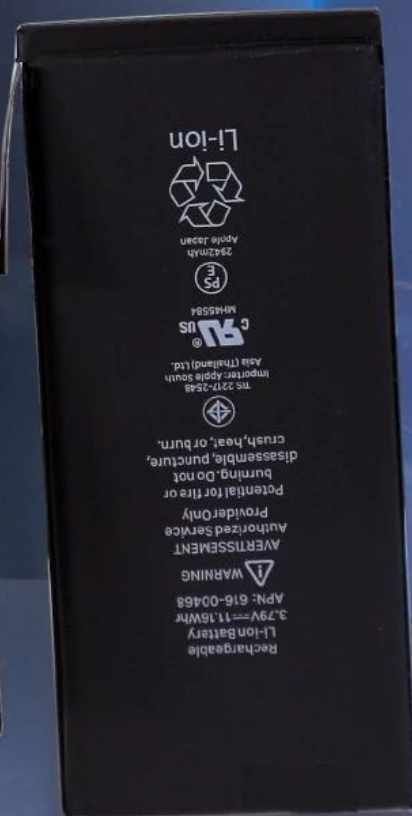
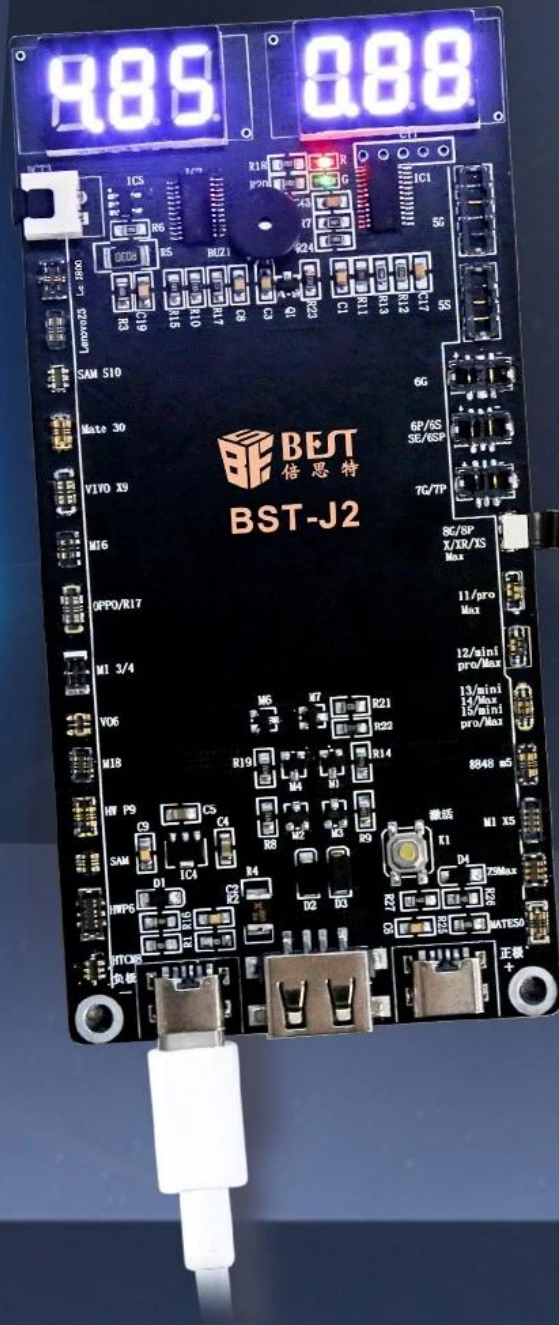


Supports iP 14/15 series

Battery Clip Test Active Panel

One-key battery activation/Charging intelligent identification/
Overload protection/Automatic power off

BST-J2



Six core strengths



4.2V regulated
output



Detect current
and voltage



Automatic power-off
protection



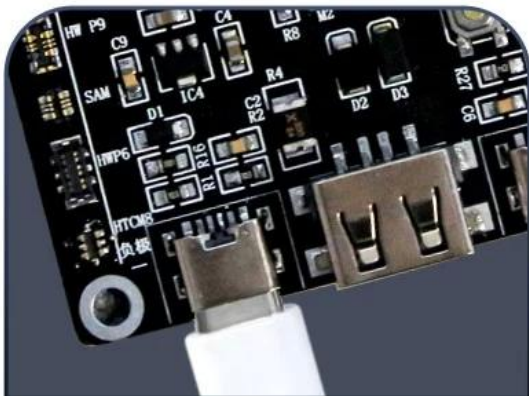
Compatible with
Apple/Android
fast charging



Automatic identification
of positive and
negative poles



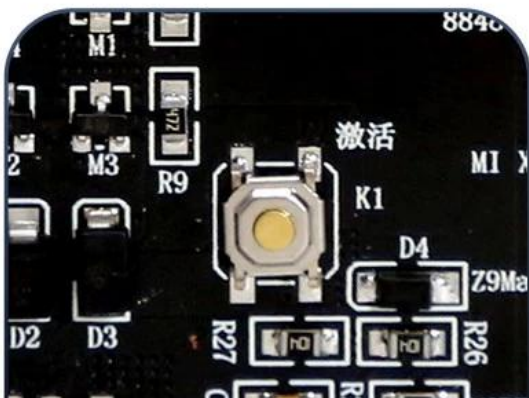
One-key activation
for power loss



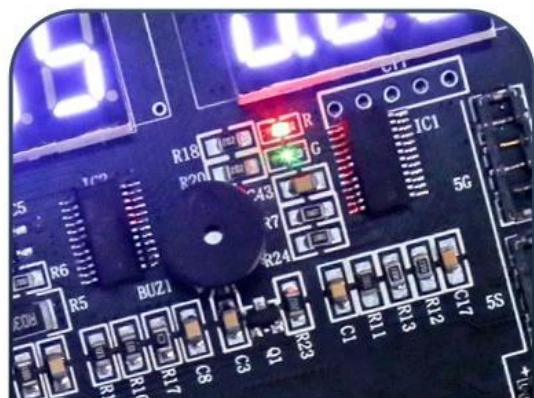
Power supply by Type-C or alligator clip



Snap on the battery connector



One-click the activation button



Automatic power-off fully charged

Charging/output multi-interface

With Type-C/USB/Alligator clip three interfaces
Both Type-C and USB interfaces can be input/output,
with stable voltage and fast charging



One-click activates the battery

Battery activation in just a few steps



Intelligent identification battery positive and negative

4.2V voltage regulator output

Overload and short circuit protection, regulated output
intelligent identification of positive and negative battery



Two charge management chips

Using two charge management chips, constant temperature and constant current, automatic power-off when fully charged

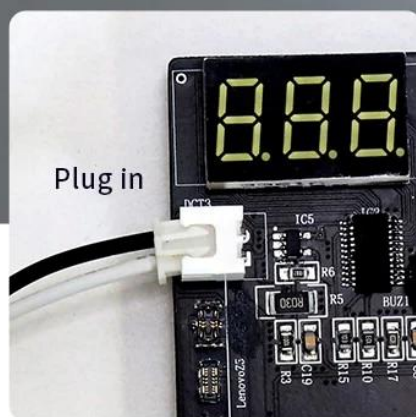


External current pointer interface

Remove the dust cover on the DCT3 interface to connect the pointer meter



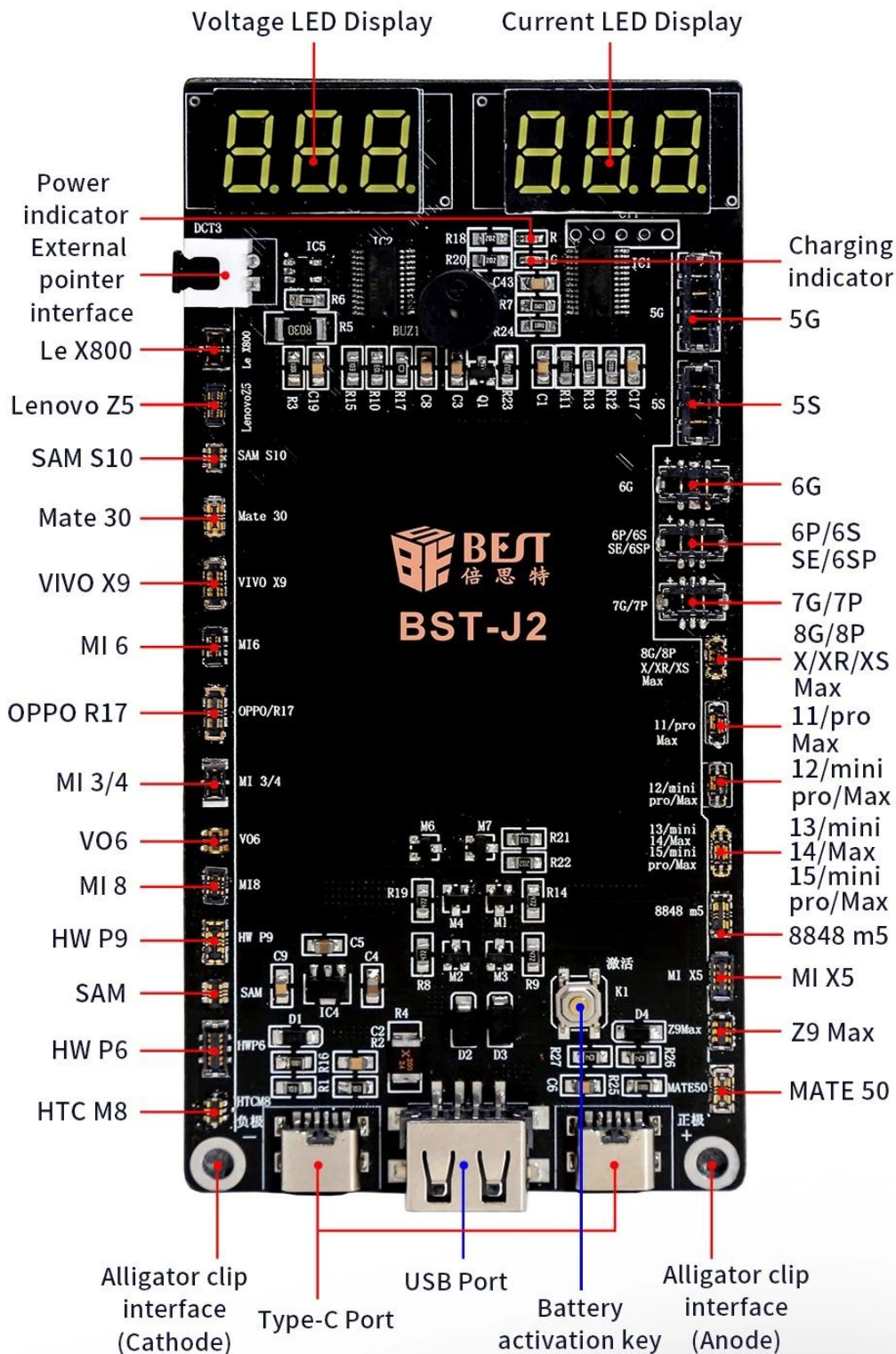
Take off



Plug in

Added Support for iP15/Mate 50 Applicable to iP5-15 Series

Integrated 27 battery holders, compatible with most of Android
and Apple batteries, 9 for Apple and 18 for Android



Alarm function

When overload/battery buckle causes a short circuit, a buzzing alarm will sound. It needs to be disconnected and reconnected before it can resume operation.



Parameters



Name	Battery Activation Detection Board	Working Voltage	4.2V~5.0V
Model	BST-J2	Screen Type	LED digital display
Product Size	63*125*10mm	Package Size	100*155*28mm
N. W.	About 40g	G. W.	About 65g
Supported models	5G/5S/6/6S/6SP/7/7P/8/8P/X/XR/XS/XS Max/11/11P/11PM/12/12mini/12P/12PM/13/13mini/13P/13PM/14/14P/14PM/14 Plus 15/15mini/pro/Max/5Se/Se1/Se2/ 99% of Android phone models		

● ● ●

