

- 1 newly designed screwdriver
- 2 Thin body in aluminum alloy with pen-shaped design, compact size and portable
- The guide to 3 AAA batteries can work 8 hours continuously
- 4 The automatic and manual operation design with maximum torque of 0.12 / 3N.m ensures high operational efficiency
- 5 Choose carefully the 18-piece S2 steel screwdriver bits compatible with most electroinc devices, verifying the different needs of customers
- 6 A great help for your daily repair projects, such as smartphones, cameras, RC drones, laptops

Technical specifications:

Power supply: 2 * AAA battery

Pair: 0.2-2N / m

Speed: 160R / min (unadjustable)

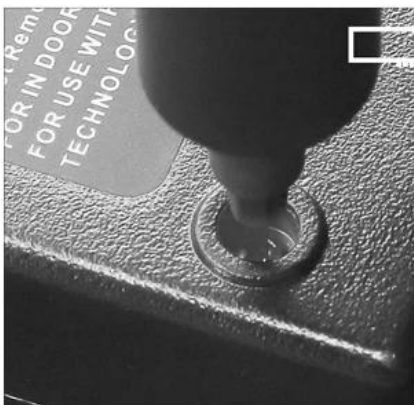
Type of screwdriver: PH000, PH0, PH2, SL1.0, SL2.0, SL3.0, T5, T6, T8, P2, P5, P6, H2.5, H3, SQ0, Y2.5, U3.0, triangle 3.0

Bit Mateiral: S2 Alloy Steel

Dimensions: 16X175mm / 0.63X6.89inch (D * L)

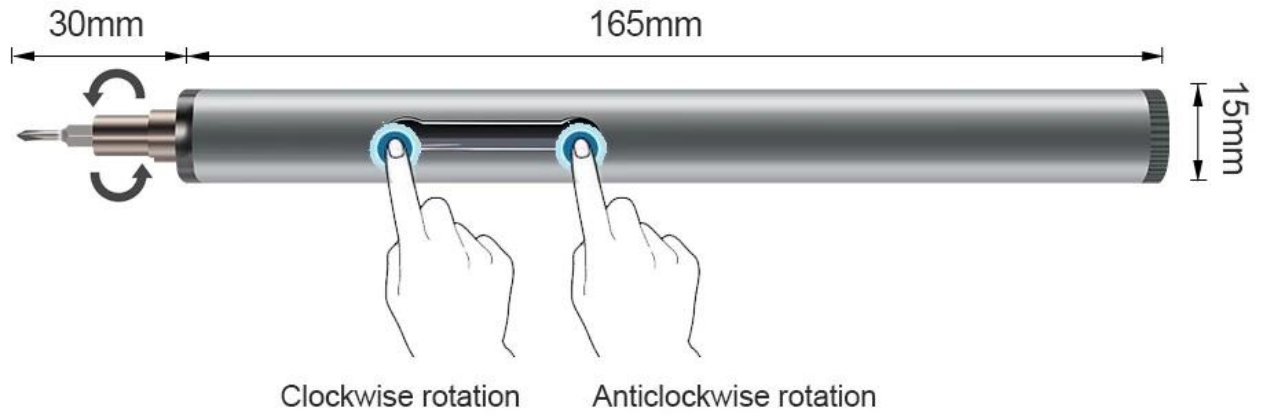
Net weight: 210 g

Cell phone, computer, glasses, camera,
watch, earphone, radio, meet most daily maintenance



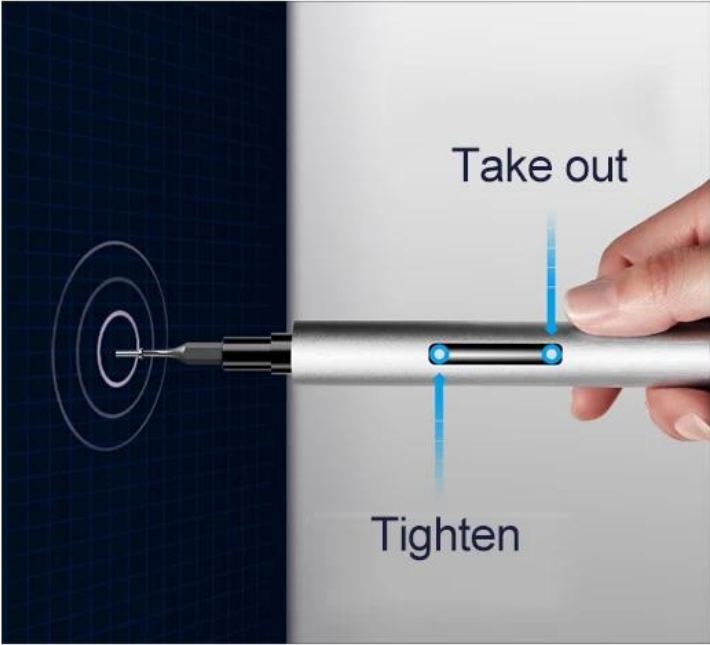
PRODUCT SIZE

Electric screwdriver



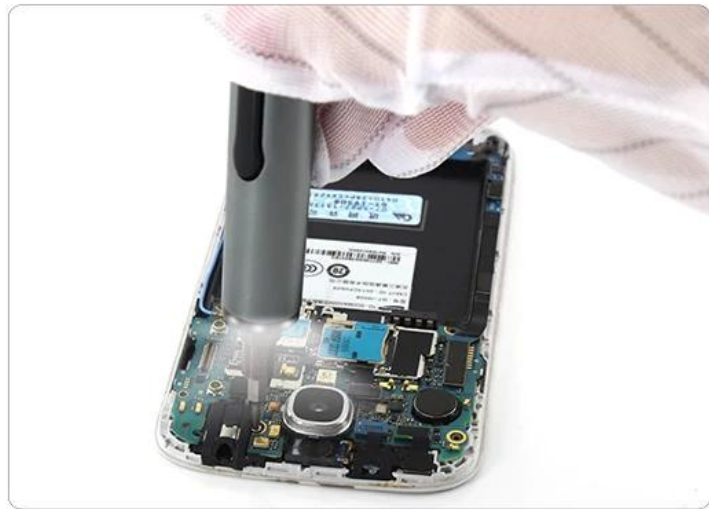
PRODUCT DETAILS







LED lighting during work



⊕	PH000	PH00	PH0	PH1	PH2
⊛	T5	T6	T8		
⊖	1.5	2.0	3.0		
⦿	2.5	3.0			
★	0.8	1.5	1.2		
U	3.0				
Y	2.5				
▲	3.0				
■	SQ0				

Model: 9911B Weight: 260G	Battery type: 7# AAA battery	Use time: 2-5hour
Product size: 243*75*42MM	Main material: AL	Bit Material: S2
Accessories: bit X 20, handle X 1, magnetizer X 1		

PRODUCT PACKAGING

