



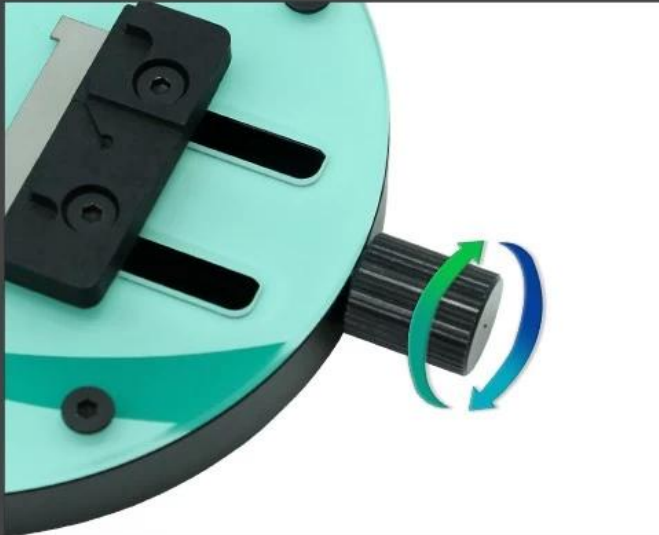
**BST-001X**

# **Toughened Heat Insulated Glass Fixture**

PCB clamp / Heat proof / No heat transfer / Anti-static



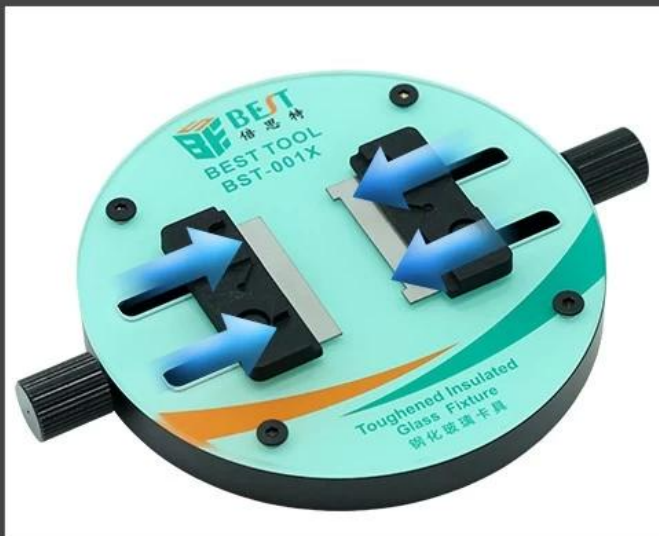
# Product Details



Adjustable knob to control slider



Glass panel, easy to clean



Adjustable fixed slider



Metal base

**Circular Base**

# Use Under Microscope



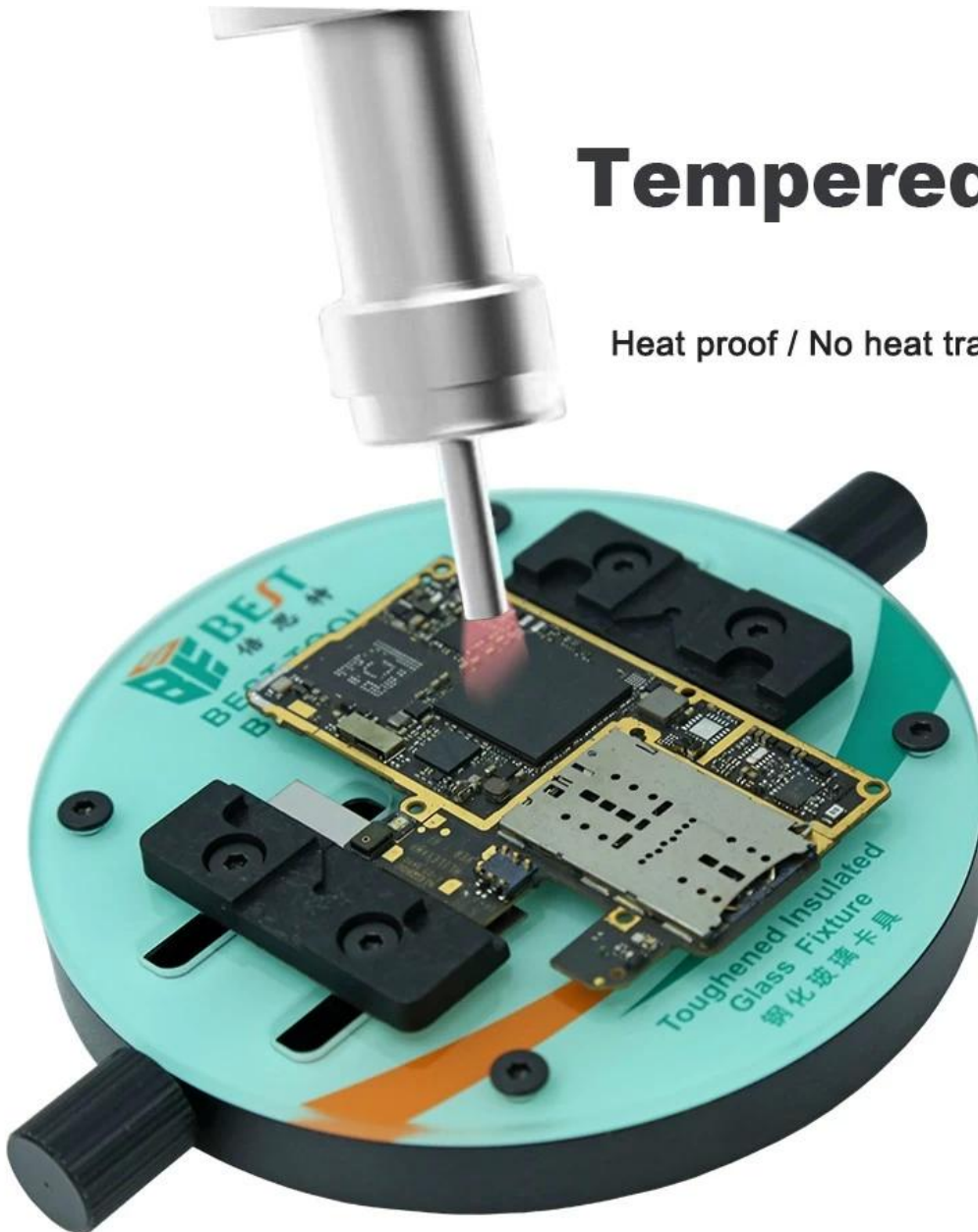
+

Suitable for microscope with circular base

# Thick Tempered Glass

+

Heat proof / No heat transfer / Anti-static





## Four characteristics



Center Clamping



Heat Insulating Glass



Anti-corrosion



Use Under Microscope

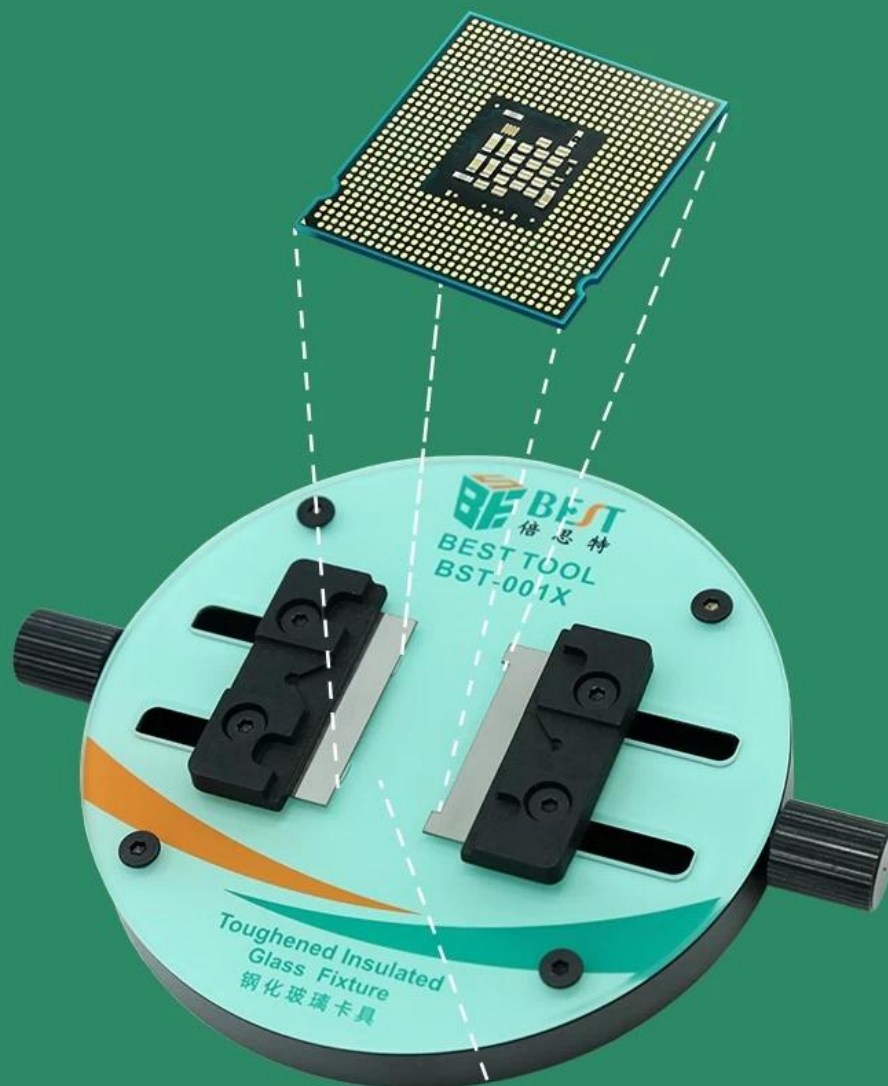


# Wide Usage

PRODUCT  
APPLICABLE

Adapt to different IC sizes

Universal/flexible is the common choice of global masters



Chip Width: 0~43MM  
PCB Width: 12~58MM

# Specifications



Product Name	Toughened glass fixture
Product Model	BST-001X
Material	Toughened glass+Stainless steel+Synthetic stone
Fixture Range	0~43mm/12~58mm
Glass Thinkness	2.5mm
Base Thinkness	9.5mm
Product Size	128×98×16mm
Package Size	115×102×25mm
N. W.	266.5g
G. W.	296.8g





# Package Size



\* The above dimensions are all manually measured and may have 1-2mm error.