



FAST HEAT CONDUCTION

# MINI

## soldering station



Aluminum alloy



Fast heat conduction



Rapid temperature rise



Easy to operate



General 900M series

## Product Usage



Model NO.	BST-MiNi
Name	soldering station
Material	Aluminum alloy
G.W.	3g
Size	14*13.8*12.5mm



# Rapid temperature rise



# Installation is simple

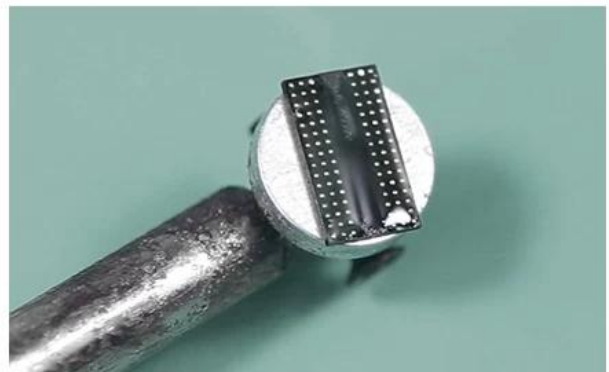
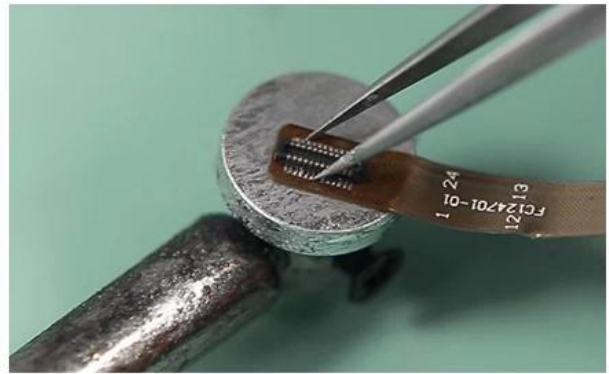
+  
MINI  
soldering station

## General 900M series

The connection is strong and will not fall off



# USE RANGE





# Product List

