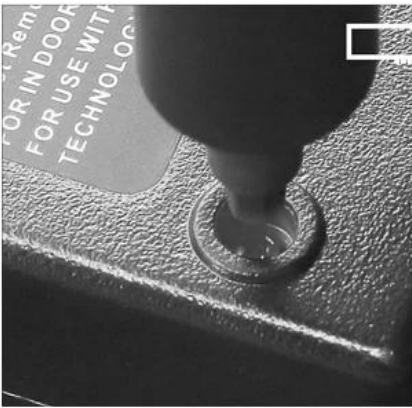


BST-9911A 電氣 維修 工具

電氣 維修

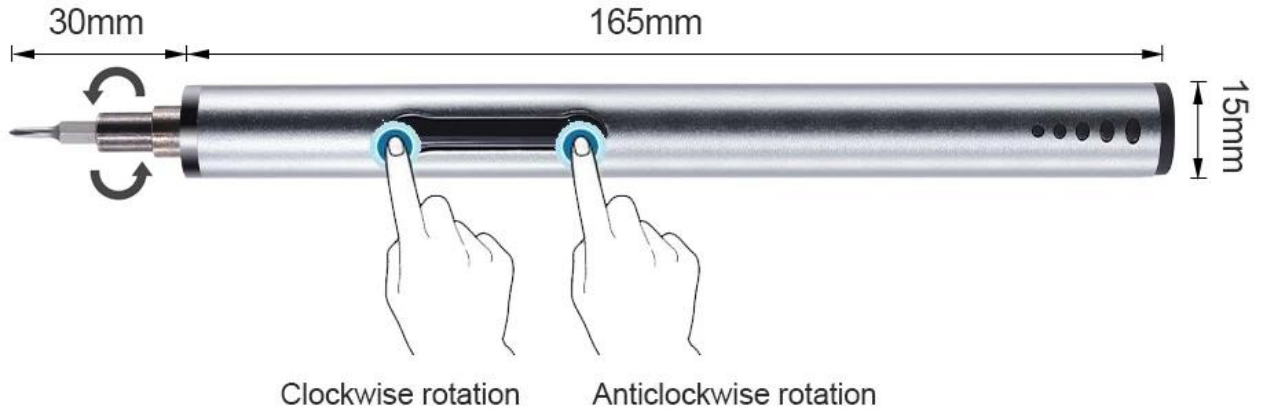
1. 電氣 維修, 維修 工具 維修 工具 維修 工具.
2. 電氣, 維修 工具 維修 工具 維修 工具.
3. 電氣 維修 USB 維修 工具
4. 6 電氣 維修, 維修 工具 維修 工具.

Cell phone, computer, glasses, camera,
watch, earphone, radio, meet most daily maintenance



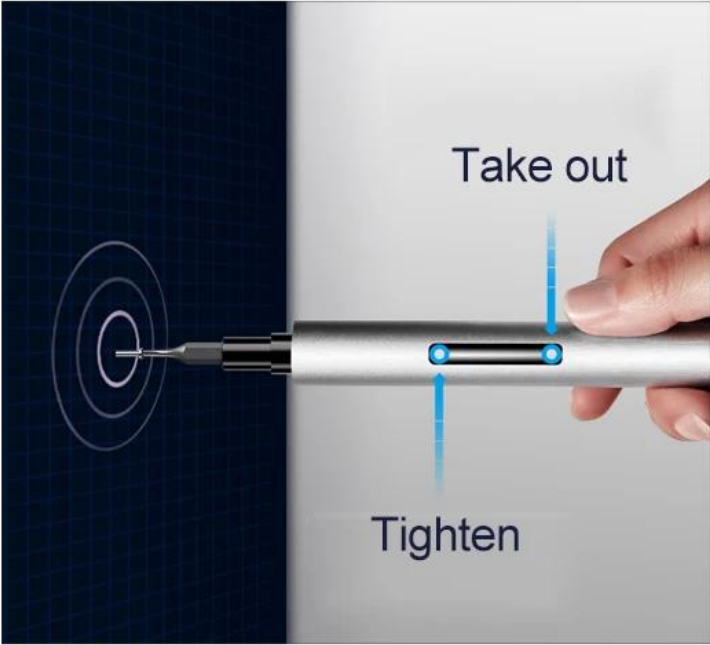
PRODUCT SIZE

Electric screwdriver



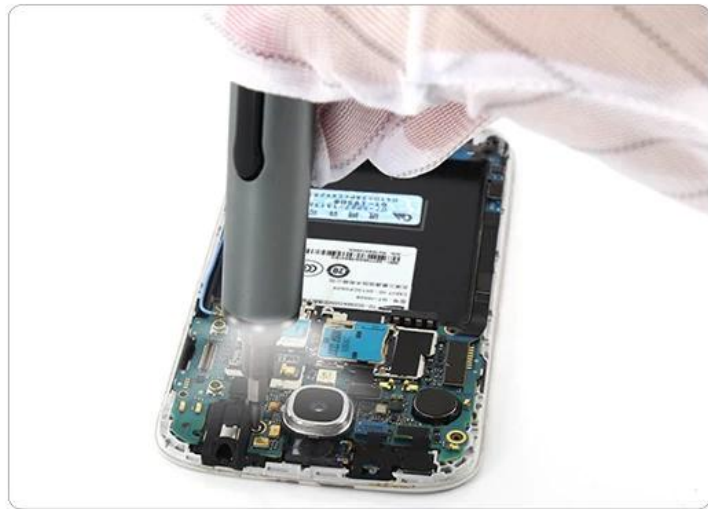
PRODUCT DETAILS







LED lighting during work



⊕	PH000	PH00	PH0	PH1	PH2
⊛	T5	T6	T8		
⊖	1.5	2.0	3.0		
⊙	2.5	3.0			
★	0.8	1.5	1.2		
U	3.0				
Y	2.5				
▲	3.0				
■	SQ0				

Model: 9911A	Weight: 260G	Battery type: lithium battery	Use time: 2-5hour
Product size: 243*75*42MM	Main material: AL	Bit Material: S2	
Accessories: bit X 20, lithium batteryX1 , handle X 1 , Charging Cable X 1			

PRODUCT PACKAGING

