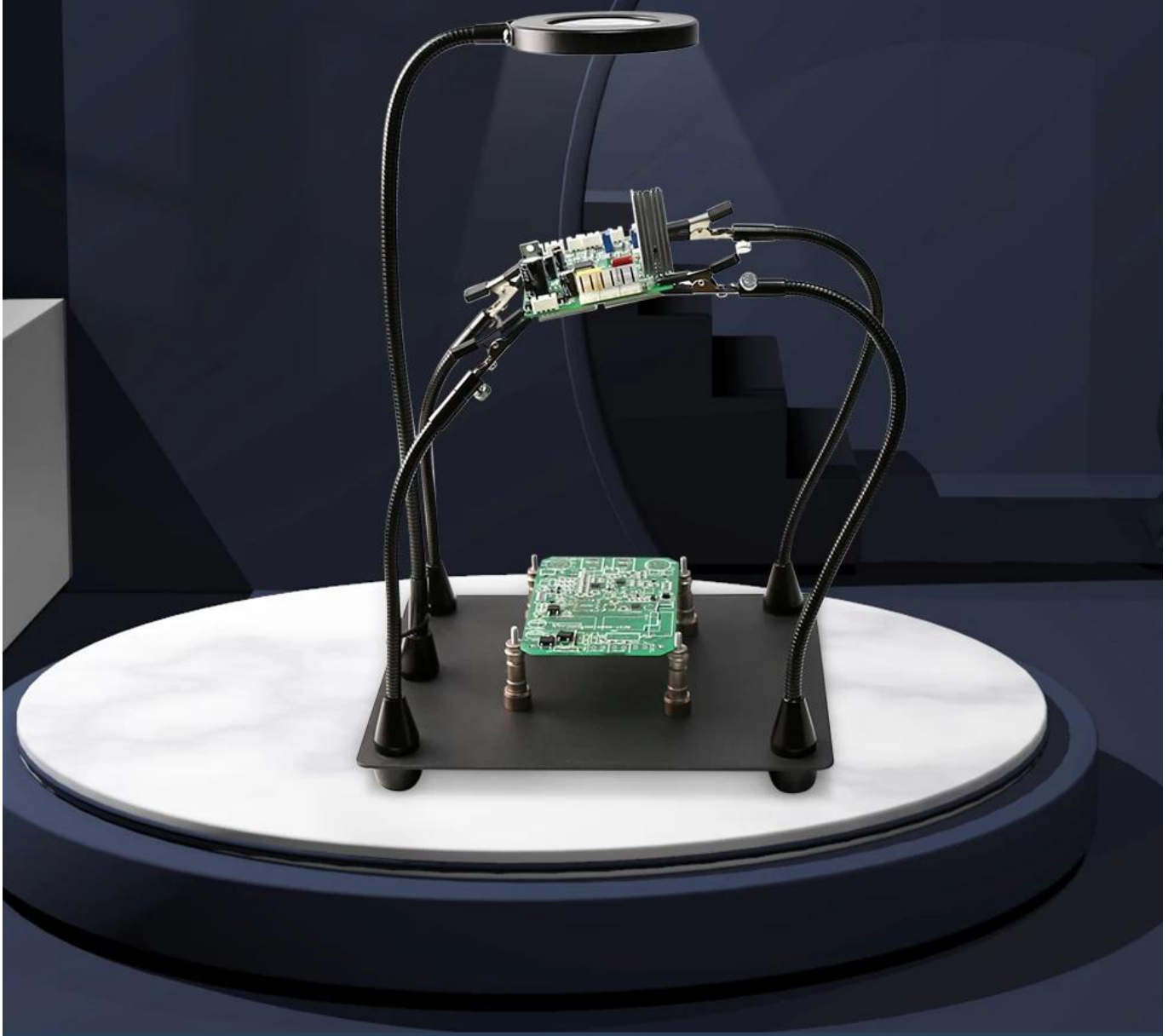


# Desk lamp maintenance magnifier

3x magnification Non-slip rubber sleeve

Does not damage the circuit board Metal universal tube

LED cold/warm light adjustable



# PRODUCT INFORMATION

---

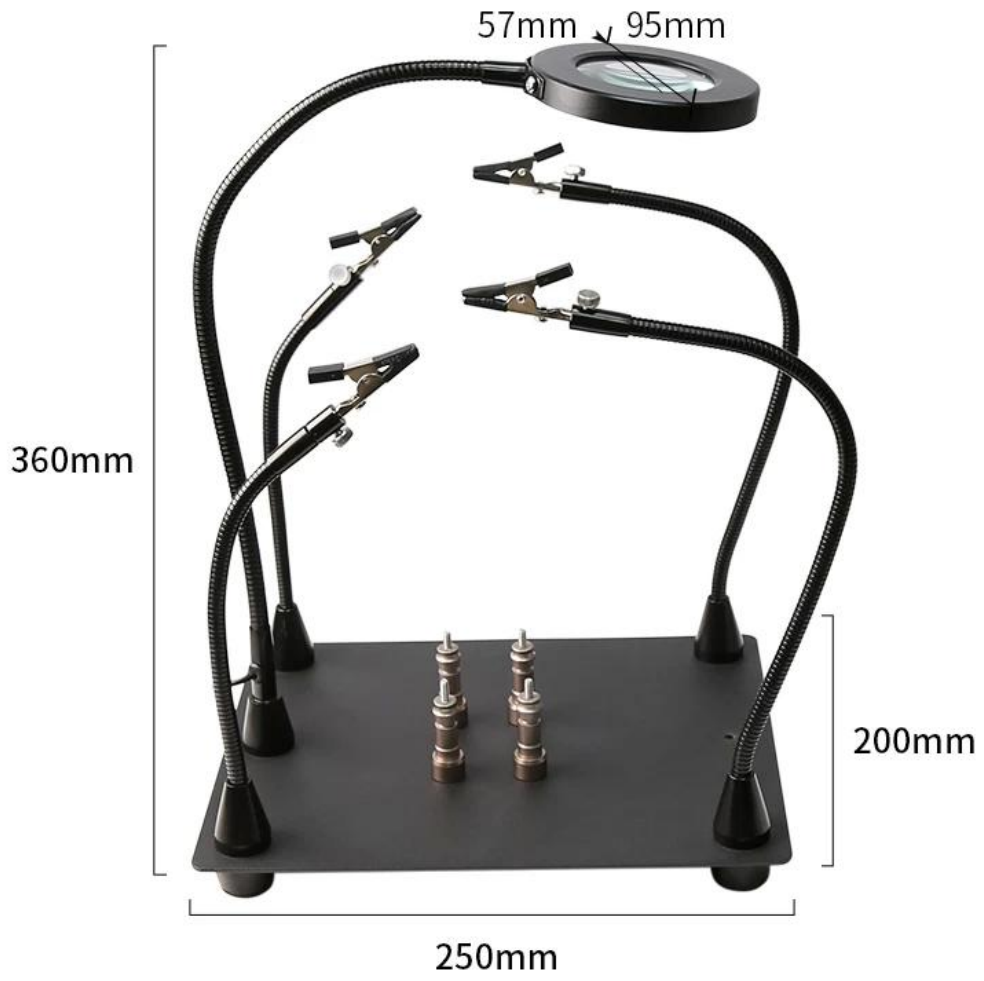


PRODUCT NUMBER:	BST-168L
PRODUCT MATERIAL:	STEEL/ACRYLIC OPTICAL LENS/MAGNETIC SHEET
PACKING:	PP BAG, FOAM BAG, COLOR BOX
PRODUCT WEIGHT:	NET WEIGHT 1585G
MIRROR SIZE:	57MM
MAGNIFICATION:	3 TIMES
LIGHT SWITCH CABLE LENGTH:	153CM
PACKAGE DIMENSIONS:	270X210X42MM
WORKING DESK SIZE:	250X200X360MM

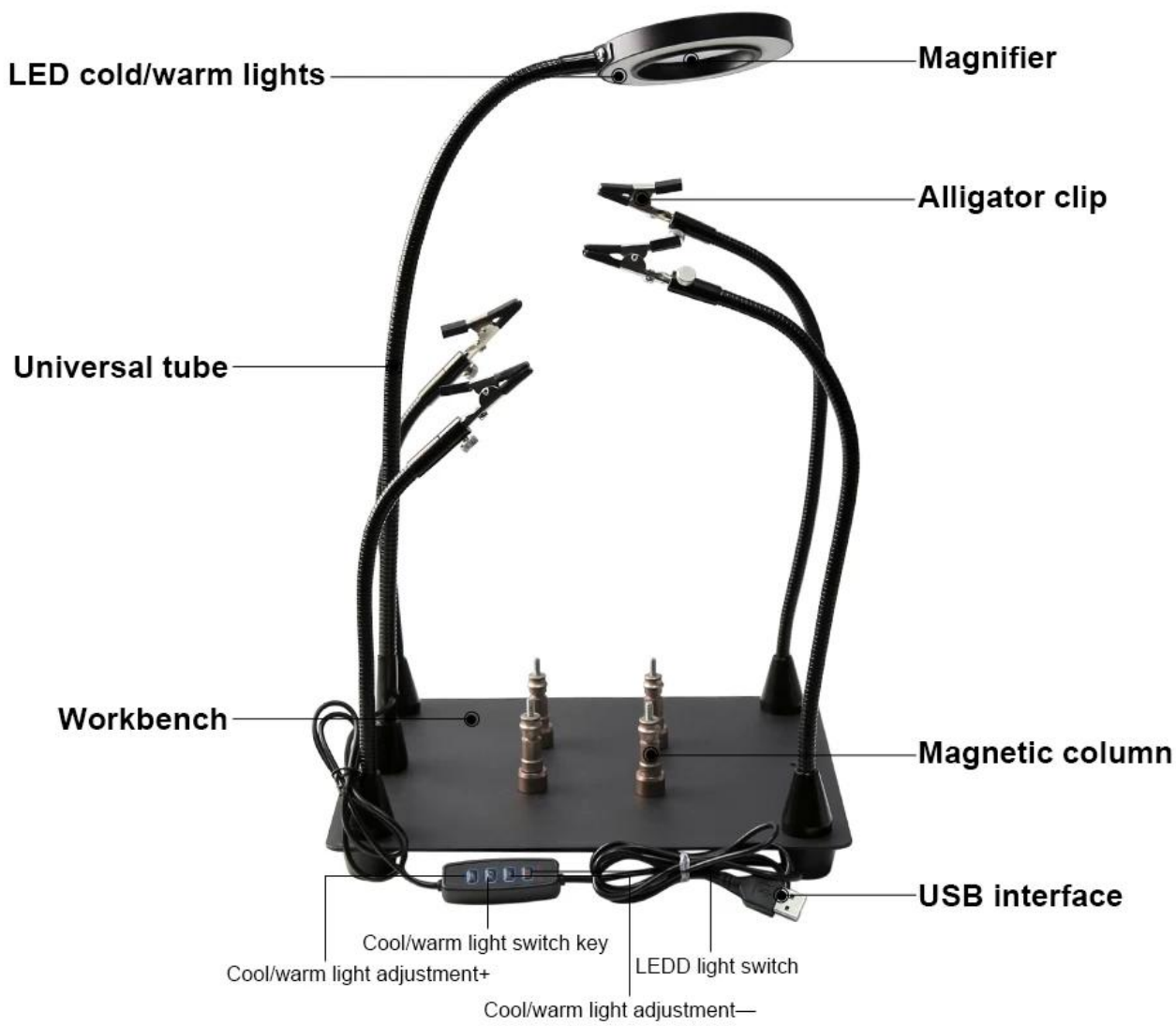
# PRODUCT SIZE

—

⋮



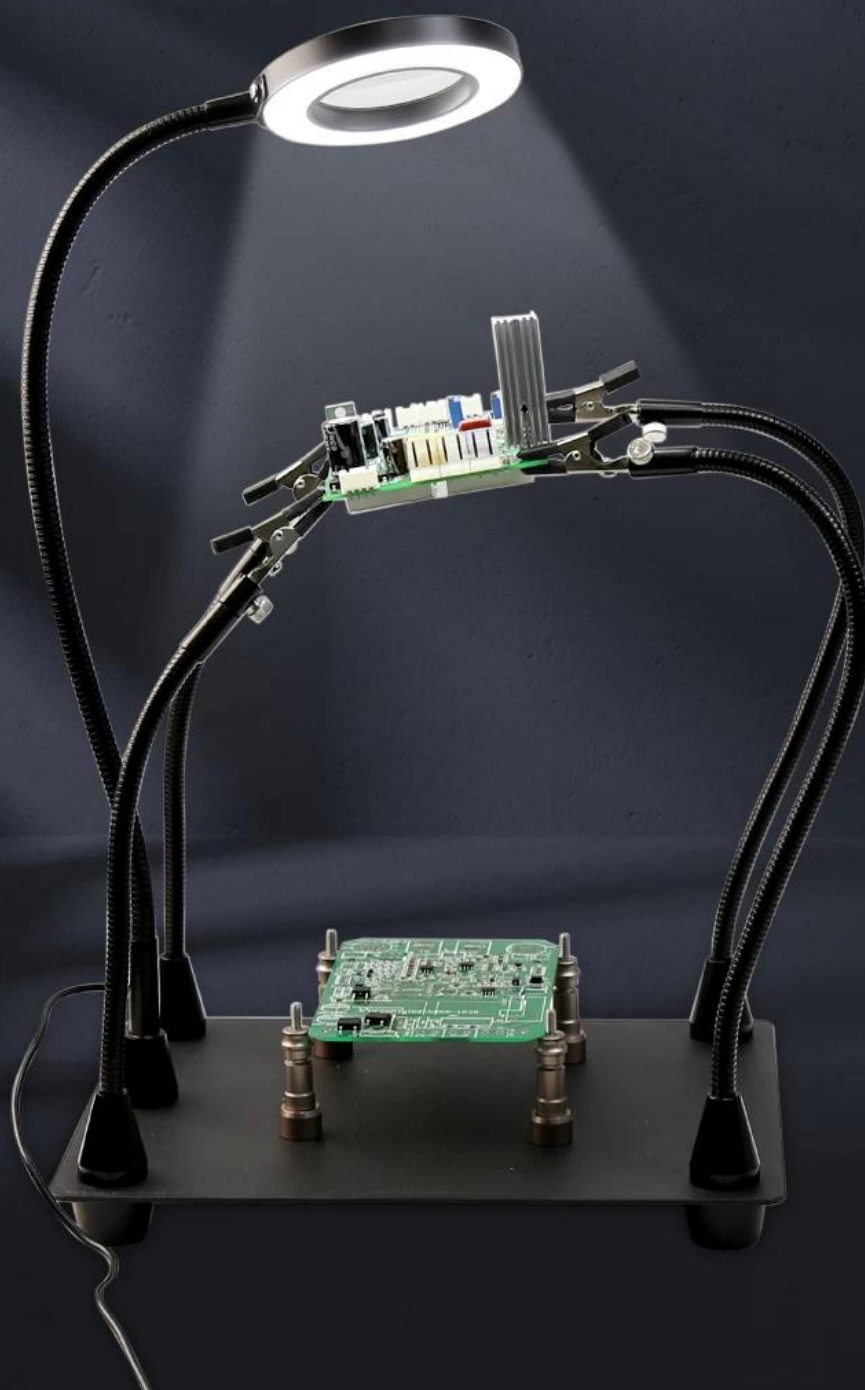
# PRODUCT DISPLAY



**LED light switch cable total length:153CM**

## LED heating and cooling light adjustable

With 10-level LED cold/warm light,  
you can adjust it according to your usage



# Maintenance welding is more precise

Repair • Test • assemble

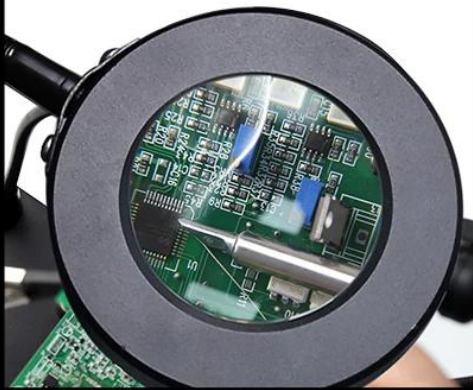


# PRODUCT DETAILS

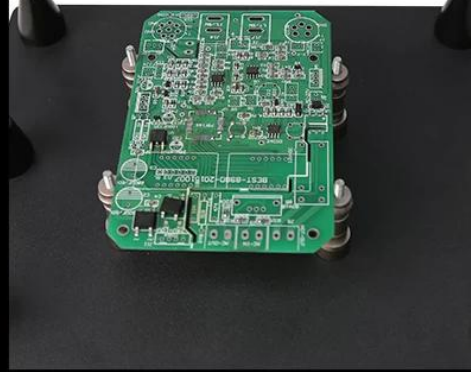
---



HD 3x magnifying glass



Magnetic post for maintenance board



Metal universal arm  
360° adjustable at will



Non-slip rubber sleeve does  
not hurt the circuit board



Comes with LED cold/warm lights



LED light switch, 10 levels of light  
+/- adjustable, cool/warm light  
toggle switch



# Multipurpose magnifying glass

...

