

Four characteristics



Ceramic heating element



Exact temperature



Heat up quickly

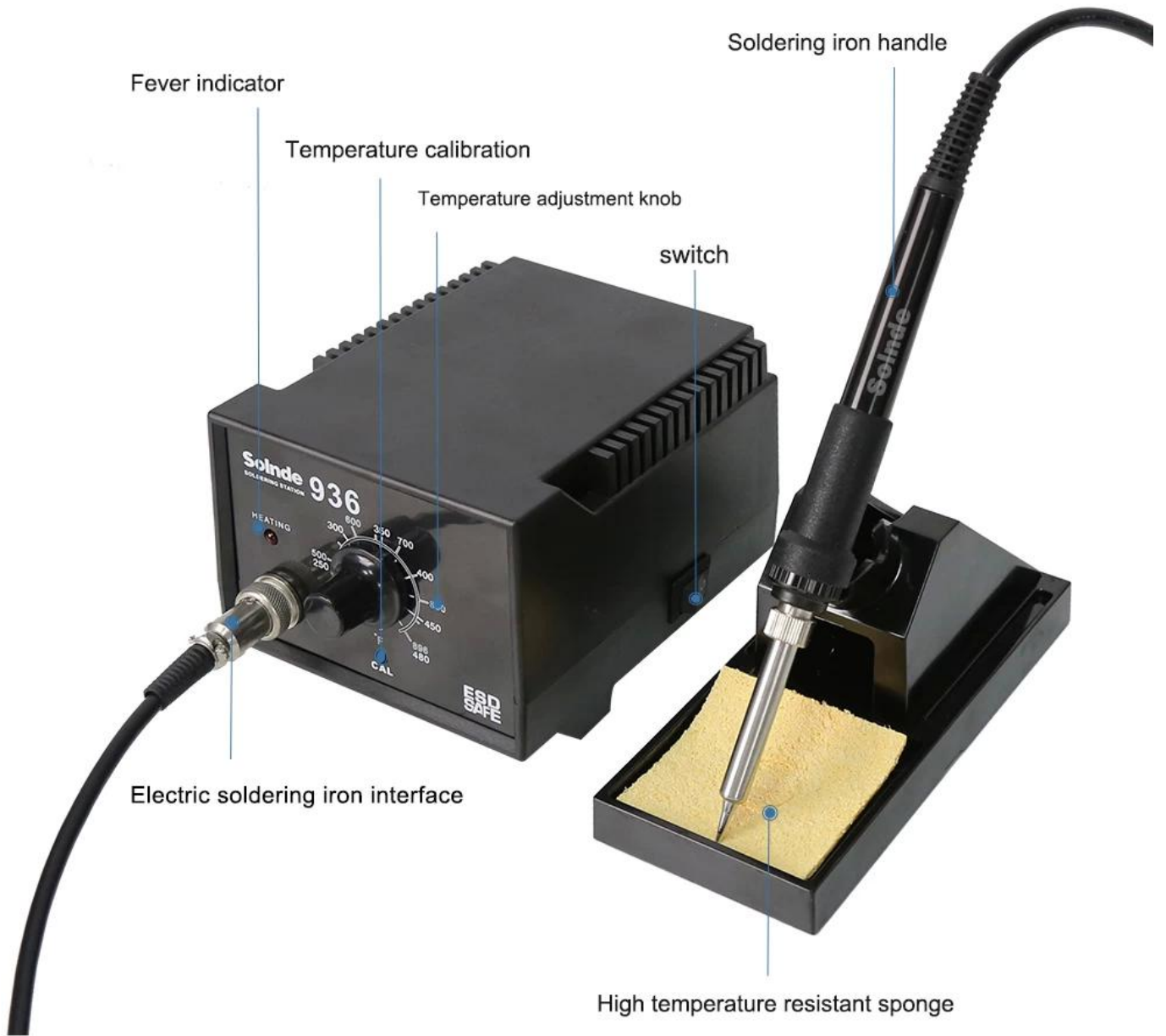


Use safety

High temperature resistant shell

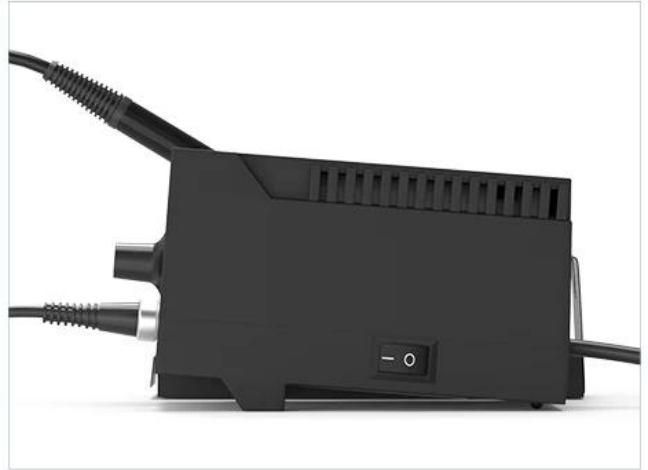
Non-slip thermal insulation silicone protective sleeve







positive



side



bottom



back

Heat up quickly Easy soldering



Product Usage



Model	SLD-936
Power consumption	60W
Body weight	1.95KG
Input power voltage	220VAC \pm 10% 50 HZ
Temperature control range	200-480 ° C / 392 ° F-896 ° F
The output voltage	24VAC
Setting method	Knob adjustment
Welding tip to ground impedance	$<2\Omega$
Welding nozzle to ground voltage	$<5\text{mV}$
Temperature stability of soldering iron	$\pm 2\text{ }^{\circ}\text{C}$
Heater	Ceramic heating element
Soldering iron	M-T-I tip

