

Product Description

1. Useful auxiliary tool in soldering and modelling field.
2. With interchangeable magnification, the two auxiliary lens are stretchable and angle-adjustable, making the operation more comfortable.
3. 3 kinds of magnifying lens: 2.5X 90mm (diameter), 7.5X 34mm, 10X 34mm.
4. An independent bright illuminating light with 5 pcs of LEDs is installed on flexible metal tube.
5. Distance and angle of lights can be adjusted freely. It can be used as a desk lamp.
6. The support clamps and alligator clips are adjustable.
7. Ideal tool when third hand is required.

The base surface is padded with steel sheet to increase base weight and reinforce stability.

Powered by external power adapter of 3 * AA batteries (not included).

Application range: electronic welding, modelling, stamp collecting, embroidery, antiques, biological observation, reading, etc.

Specification

Color: black + silver

Lens diameter: 90mm & 34mm / 3.54in & 1.34in

Power: external power or 3 * AA Battery (not included)

Power adapter: Input 110-240V 50/60Hz, Output: DC 4.8V 250mA

Plug standard: EU plug

Welding holder size: length 6.3cm/2.48in, Diameter 2.7cm & 1.8cm/ 1.06in & 0.71in

Base size: 10 * 6.8cm / 3.94 * 2.68in (L * W)

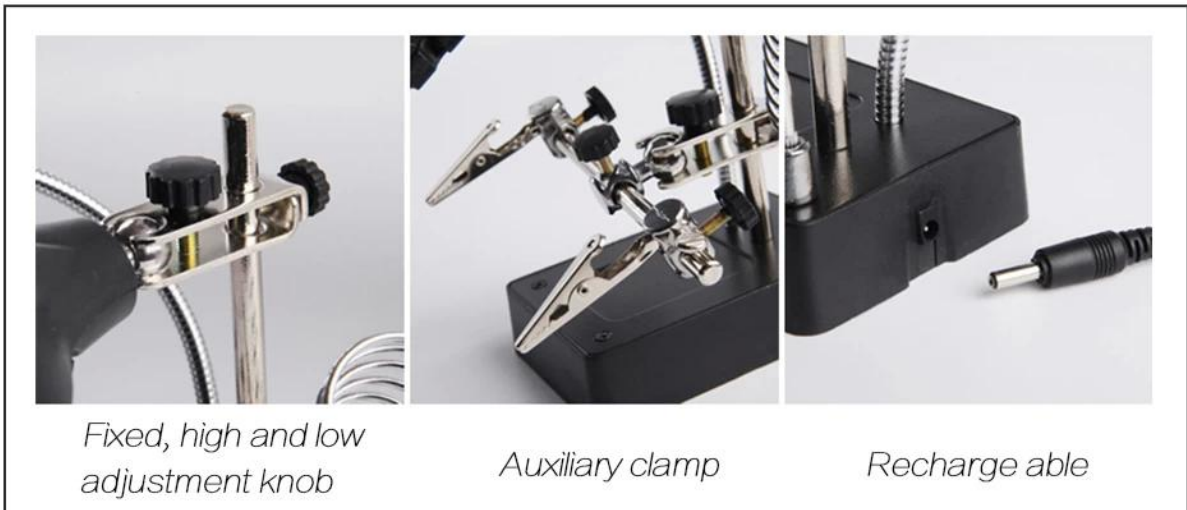
Package Include:

- 1 * Base Stand & LED Light
- 1 * 90mm Diameter Lens
- 2 * 34mm Diameter Lens
- 1 * EU Power Adapter
- 1 * User Manual

PRODUCT SIZE



PRODUCT DETAILS



PRODUCT FEATURES

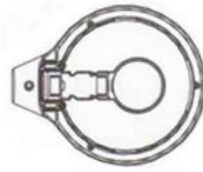
Scalable small lenses that work at different times can be selected to make work easier for three different stalls to expand the visual range



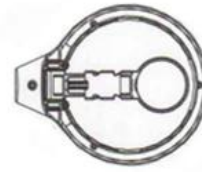
Adjust the angle



First gear



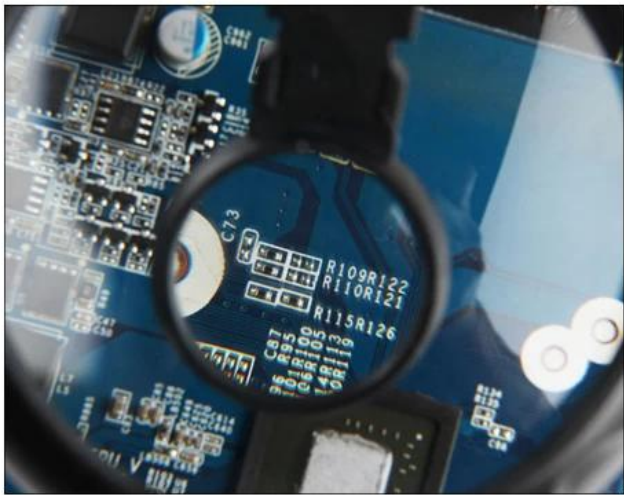
Second gear



Third gear



Large lenses



Small lenses

PRODUCT PHOTOGRAPH



