

Nombre: Microscopio estéreo binocular

Modelo: BST-X65

Ampliación: 6,5x-65x

Tamaño del área de trabajo: 310*258mm

Peso bruto: 5,09 kg.

Tamaño del paquete: 385*330*225 mm



Dedicated to maintenance inspection. Binocular stereo microscope

Naked eye 3D effect, binocular diopter adjustable large maintenance work stage



A combination of advantages

Six characteristics



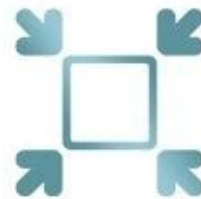
6.5-65 continuous doubling

Continuous zoom



Hd objective

HD Objectives



24mm field of view

24mm field of view range



LED adjustable light

LED adjustable light



3D naked eye

3D naked eye



360° rotation

Rotate 360 degrees

Observed height :110mm

Field of view :24mm

**6.5 times. -65 times
Adjustable
magnification**



Working distance



Eyepiece range



Continuous
doubling

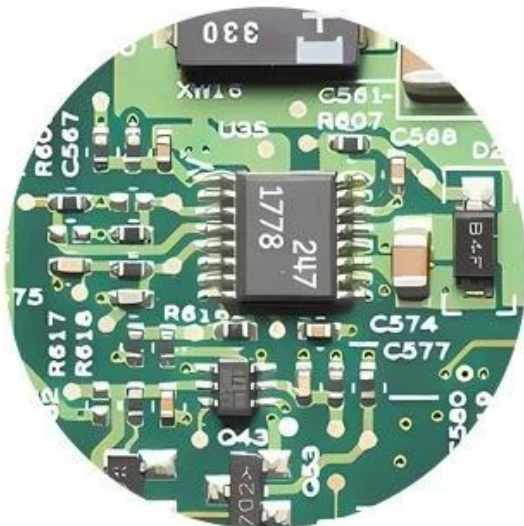
Observation height :100mm

Field of view :20mm

**7 times to 45 times
Adjustable
magnification**

VS





Wide-angle eyepiece observation effect. Wider view, bright and comfortable observation



Ordinary eyepiece observation effect. Narrow visual field, dark observation, easy visual field fatigue

High eye point: The eye distance from the eyepiece can also see the scene in the eyepiece, not only back. Look comfortable and suitable for people wearing glasses



It can be adjusted according to the different visibility of the two eyes to achieve the effect of clear eyes

Continuous zoom focus

Fine-tune the 0.65–6.5X continuous magnification knob, combined with the focusing handwheel for fast and clear imaging



Naked eye 3D experience

The optical axis of the two mirrors constitutes the Angle of view equivalent to the binocular observation of the human eye. In this way, the stereovision image of three-dimensional space is formed





Wide range of application

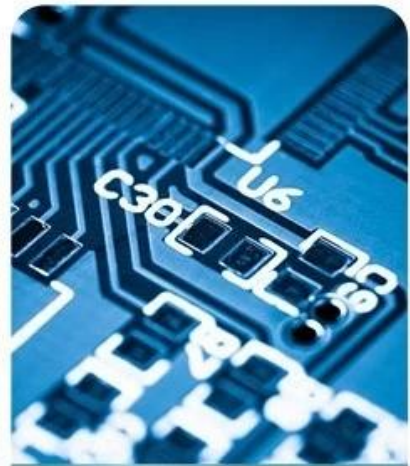
Suitable for PCB repair, CPU repair, wiring repair, etc



**Mobile phone
repair**
PHONE REPAIR



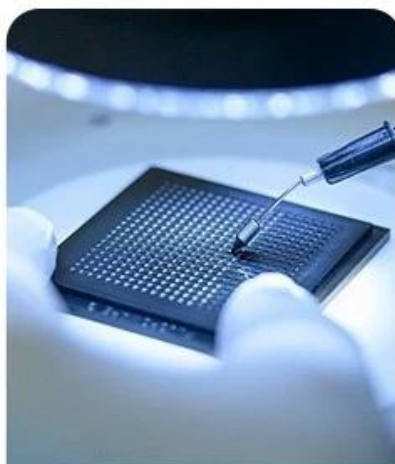
Line repair
SMI PATCHES



Line link
BGA PLANTING TIN



**Watch
restoration**
WATCH REPAIR



**CPU
complement**
WELDING WORK



**PCB
maintenance**
CAPACITANCE RESISTANCE

High point wide-angle eyepiece. Ultra HD wide field of view



45°	32.2 mm	±5D	55-75
Bevel the head	Field of view	Dioptic regulation	Pupil distance is adjustable

Equipped with high light transmittance glass, magnifying image strong three-dimensional sense, high resolution, image surface. Flat, both eyes support diopter and pupil distance adjustment, ergonomic design. Meter, observation is not easy to fatigue.



Multilayer coated objective

The optical lenses are plated with a special film layer, revealing the effect of anti-reflection and so on, and the imaging is stable and clear.
Metal copper stepless adjustment, can adapt to long distance work

continuous
zoom

Mildew
proof
durable

multilayer
Coating
film

copper
Principal
material



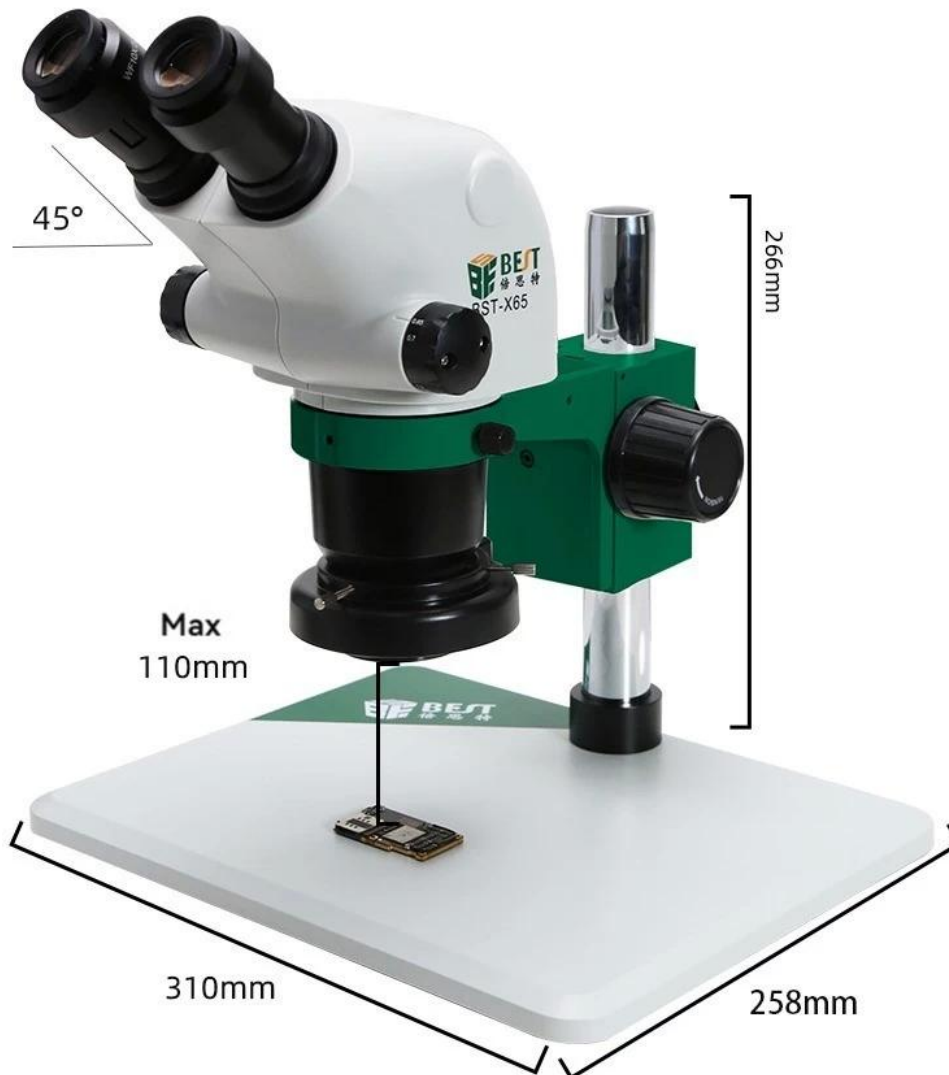
LED adjustable light | adjustable

The light in the dark is more balanced and the brightness is adjustable. Make the object clearer to observe and more suitable for work





Product parameter



Field of view Radius	6.5X	7.0X	10X	20X	30X	40X	50X	60X	65X
Blow up magnification	32.2	31.1	21.4	10.6	7.1	5.4	4.3	3.6	3.4
eyepiece	Working distance	Trimmer mirror	Interpupillary distance	Eyepiece Angle	Net weight	Gross weight	Working area		
10x/24	110mm	0.5X	50-75	45°	4.33kg	5.09kg	310*258mm		
Package size		385*330*225mm			Eyepiece specification		Binocular style		