



FAST HEAT CONDUCTION

# Mini

## soldering station



Aluminum alloy



Fast heat conduction



Rapid temperature rise



Easy to operate



General 900M series

## Product Usage



|           |                   |
|-----------|-------------------|
| Model NO. | BST-MiNi          |
| Name      | soldering station |
| Material  | Aluminum alloy    |
| G.W.      | 3g                |
| Size      | 14*13.8*12.5mm    |



# Rapid temperature rise



# Installation is simple

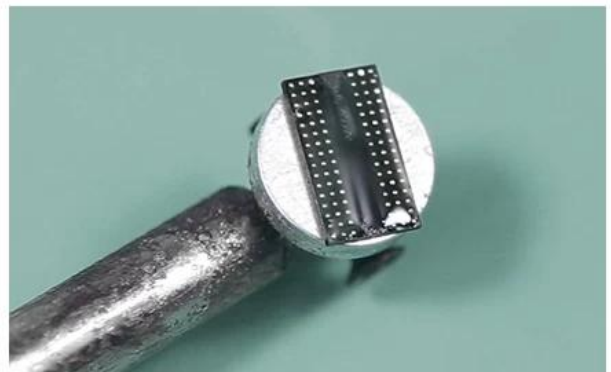
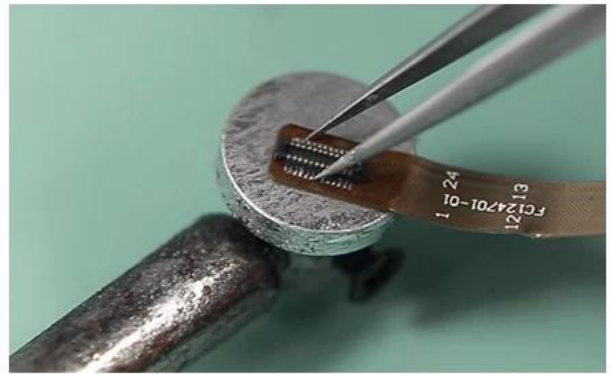
+  
MINI  
soldering station

## General 900M series

The connection is strong and will not fall off



# USE RANGE





# Product List

