

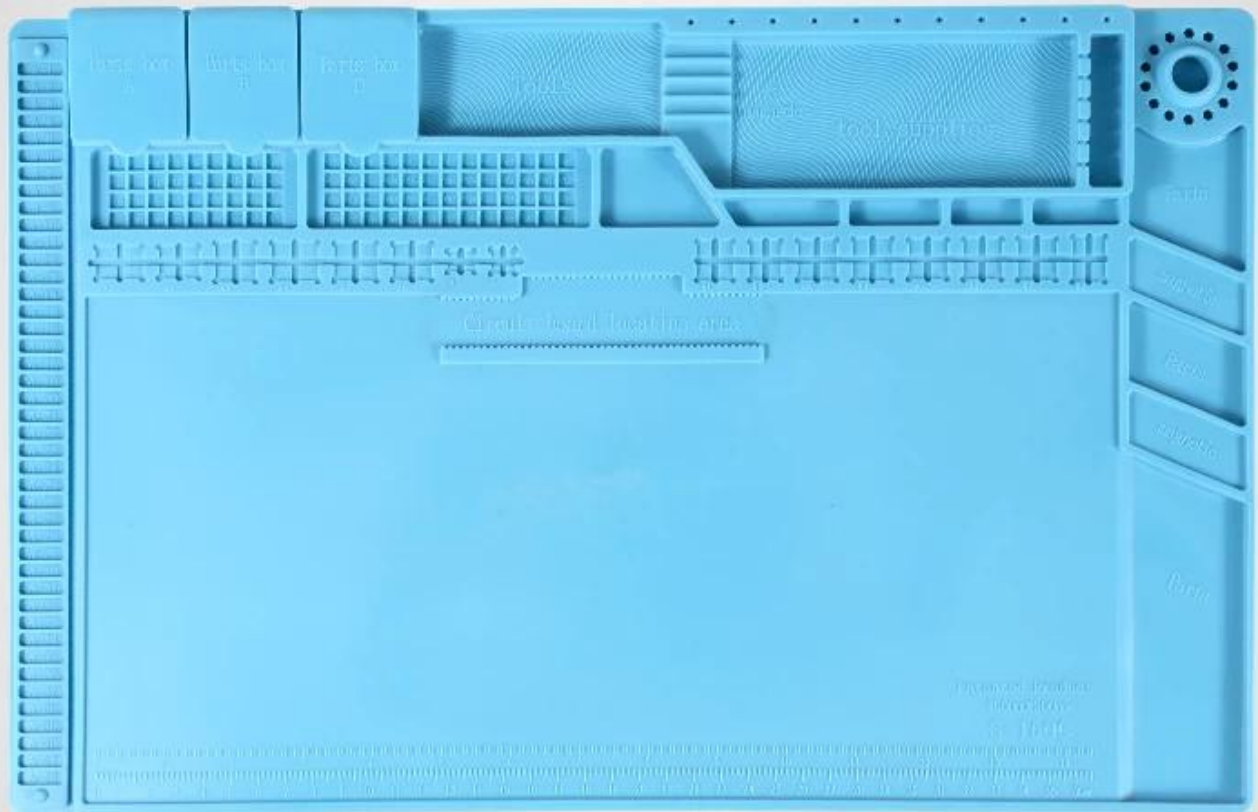
Descripción del producto

1	Simplifica el trabajo de reparación.
2	Resistencia a altas temperaturas de 500 ° C, no tóxico.
3	Trampeo térmico, antideslizante, mejora de la productividad.
4 4	Numerosas posiciones de orificios para tornillos de fijación, chips IC y piezas pequeñas.
5 5	Un buen socio para la herramienta de aire caliente, utilizada para reparar teléfonos celulares, tabletas, computadoras.
6 6	Esta es una almohadilla aislante de silicona, puede amortiguar con agua de limpieza diluyente / PCB, termoestable, anticorrosivo.
7 7	Para plataforma de mantenimiento, para estaciones de soldadura, para máquina laminadora, para máquina de eliminación de burbujas

especificación

Nuevo	Nueva llegada
Color	Azul
Material	Gel de sílice
Tamaño del producto	aproximadamente 45m * 30 * 0.7cm
Paquete	caja de color
género	Almohadilla de aislamiento térmico
utilizar	Plataforma de mantenimiento

HIGH TEMPERATURE RESISTANT SILICA GEL **WORKING PAD**



Heat resistance



Soft silicone

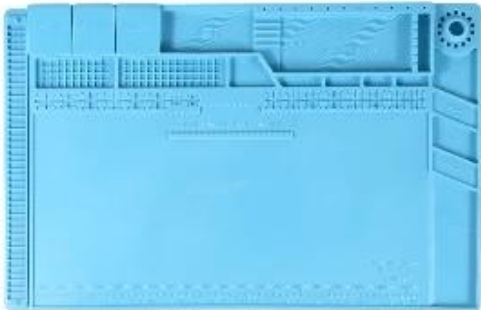


Magnet adsorption



anti-static

Product Usage



MATERIAL	Soft silicone
BRAND	BESTOOL
PRODUCT NAME	Working Pad
SIZE	450mm X 300mm
TYPE	Magnetic adsorption Heat resistance anti-static

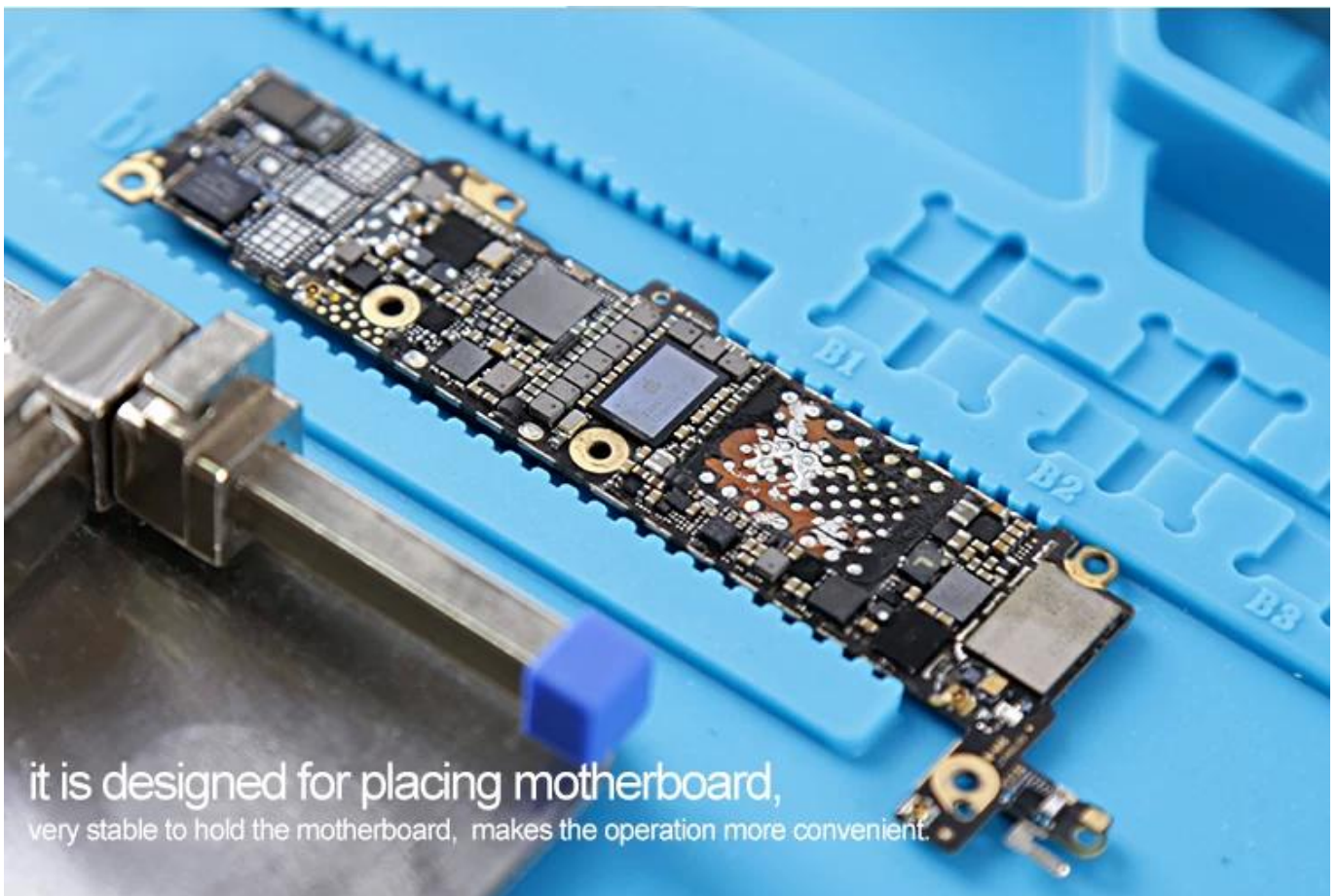
▼ CHARACTERISTICS

This product is used for IC products repairing (suitable for some models). It is made of high-quality silicone insulation for high temperature resistance. With 4.0mm thickness, it has several card slots for placing various tools. The storage groove has magnetic adsorption, where small screws can be placed to prevent loss.

HIGH QUALITY SILICA GEL

SOFTNESS AND HIGH ELASTICITY

GOOD PRODUCTS ARE MORE THAN JUST
EXCELLENT CRAFTSMANSHIP,
BUT THE REAL CORE IS
SELECTION OF EXQUISITE MATERIALS.



it is designed for placing motherboard,
very stable to hold the motherboard, makes the operation more convenient.



Magnetic adsorption

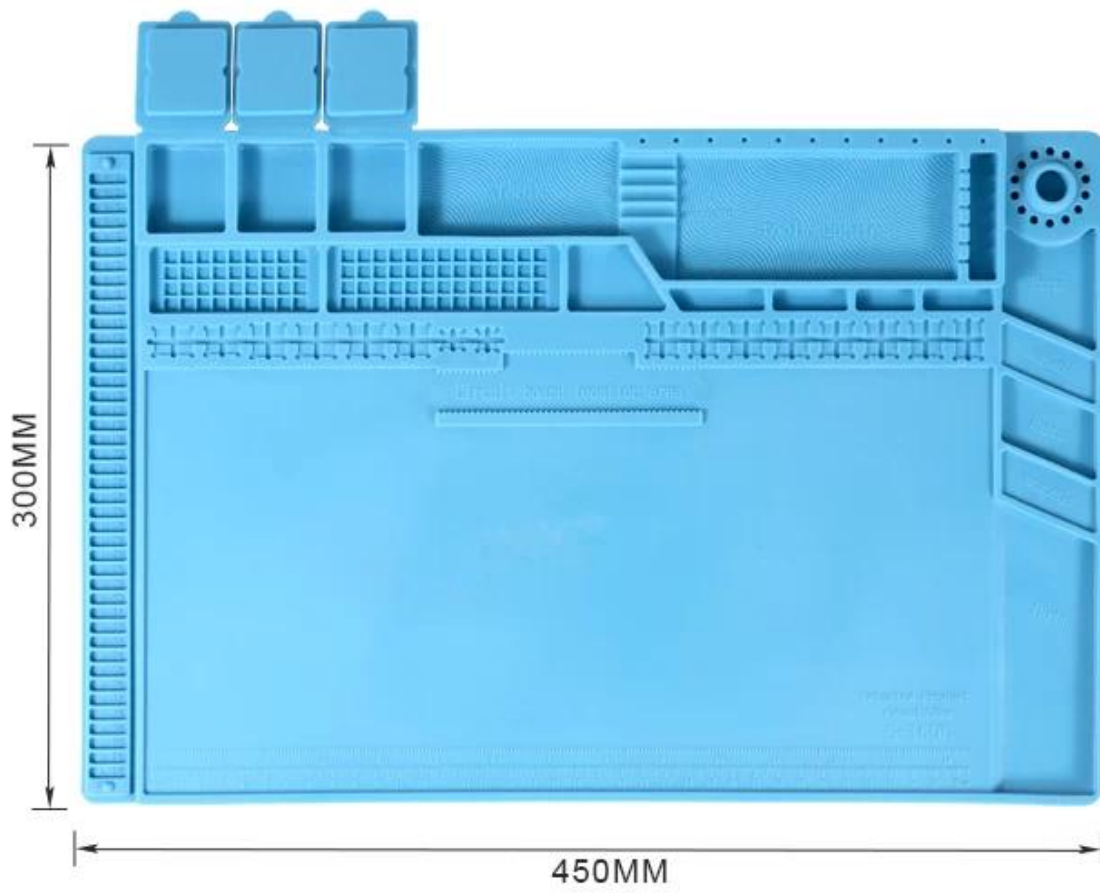


Heat resistance



- ① SCREWDRIVER HEAD STORAGE
- ② COVER STORAGE BOX
- ③ SCREWS PLUS MAGNETIC ZONE
- ④ SCREW POSITION
- ⑤ MOTHERBOARD GROOVE
- ⑥ SCREWDRIVER PLACEMENT AREA
- ⑦ TOOL PLACEMENT AREA
- ⑧ MEASURING RULER

PRODUCT SIZE



Thin to 4.00mm

It can resist 500°C high temperature

