

# BST-495

## Table 1

1. [Placeholder]
2. [Placeholder]

## Table 2

[Placeholder]	110V / 220V
[Placeholder]	[Placeholder]
[Placeholder]	ABS
[Placeholder]	1.45
[Placeholder]	6
[Placeholder]	53 * 28 * 62
[Placeholder]	11

## Table 3

## Product Usage



MODEL	BST-495
POWER	150W
OUTPUT VOLTAGE	ac220v-110v
WEIGHT	15kg
BODY SIZE	285 * 245 * 345mm

### ▼ CHARACTERISTICS

This smoker has three layers of filter, which is used in various fields with too much smoke. The volume of smoke can be adjusted freely, the power is large, and the service life is long

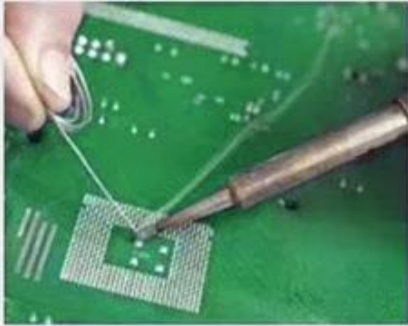
## PRODUCT INFORMATION

ACTIVATED CARBON FILTRATION

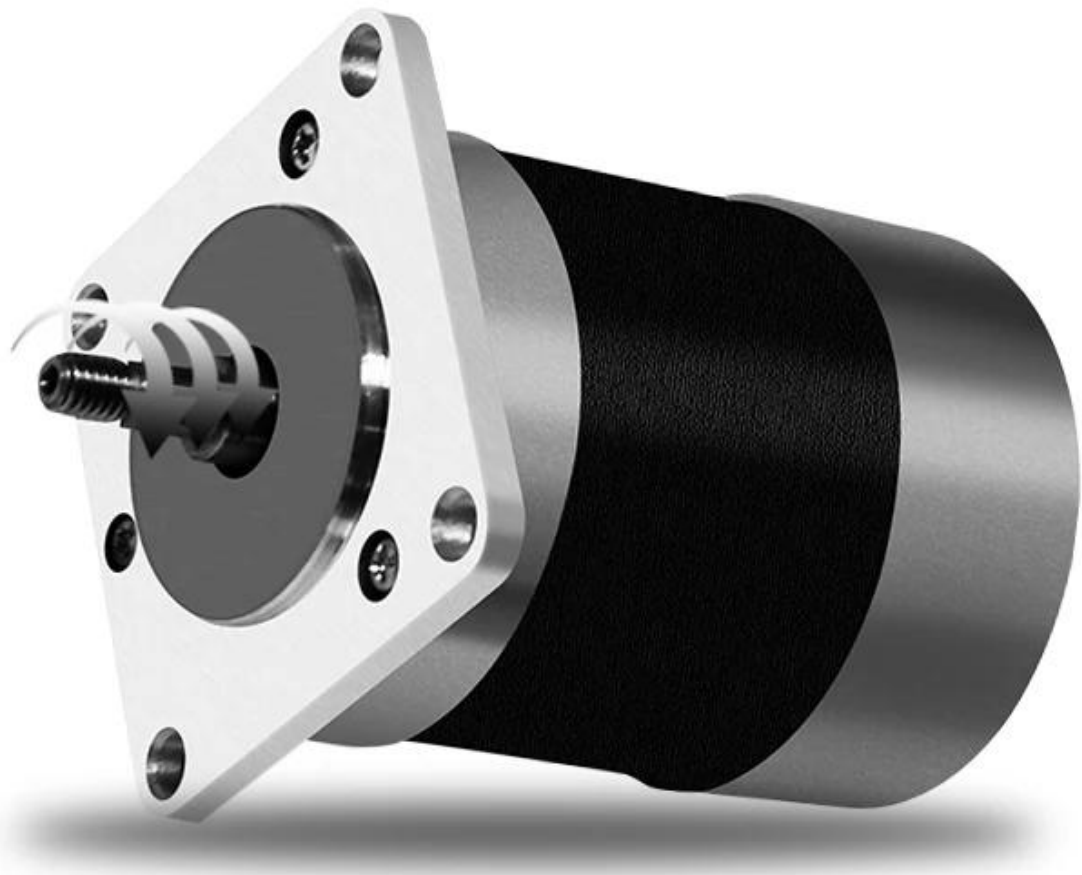
WELDING PURIFICATION



# APPLICABLE TO VARIOUS FIELDS



DC brushless motor, stable performance, long life



Brushless Motor



Eliminate smoke and odor



long life



Power saving

# MULTI-LAYER FILTRATION



Filtering PM60



Filtering PM0.3



Filtering smoke



## PRODUCT SIZE



# Operation instructions

Turn on the power switch (such as P1), adjust the speed control knob to make the machine work according to the required air volume, and turn the knob to "off" to stop the machine, Turn to "on" position to start, turn to "Max" position to reach the maximum value (such as P2)

---



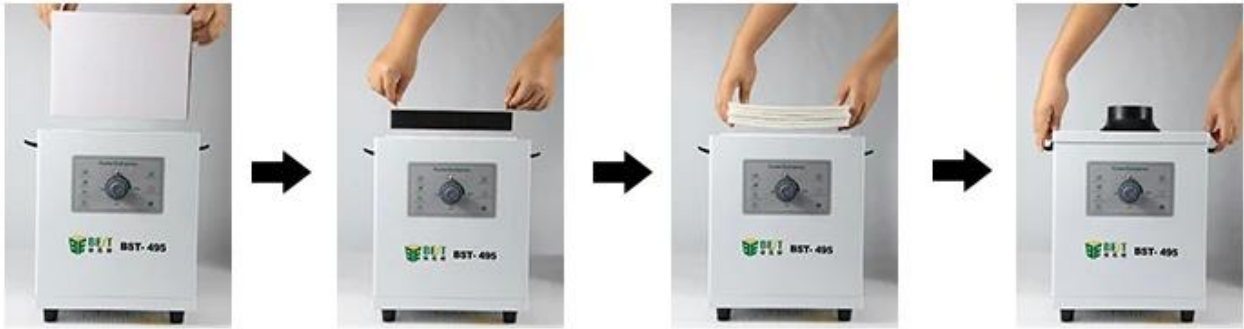
【P1】



【P2】



## FILTER INSTALLATION INSTRUCTIONS



## ACCESSORIES DISPLAY

