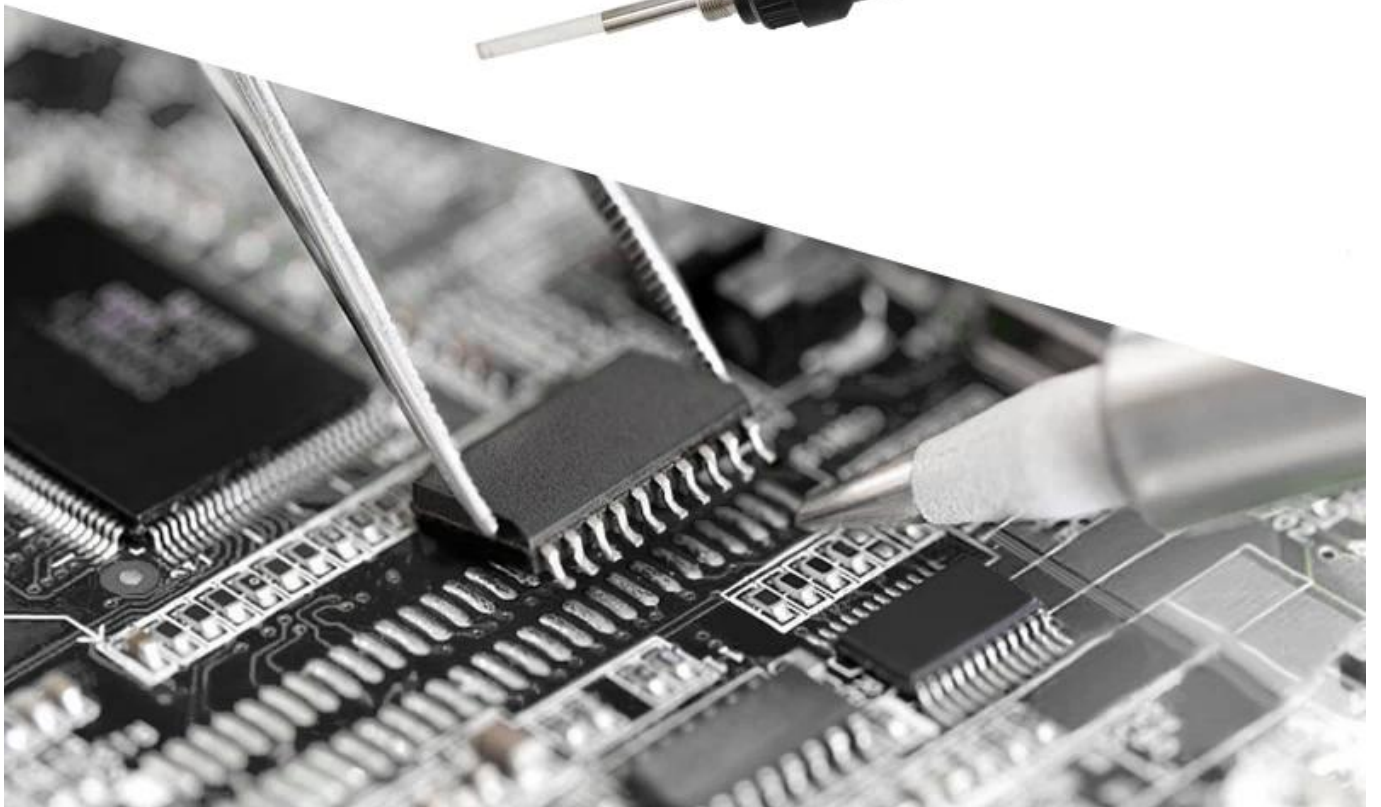


Solnde





Four characteristics



Ceramic heating element



Exact temperature



Heat up quickly



Use safety

Solnde

Soldering iron handle

Fever indicator

Temperature calibration

Temperature adjustment knob

switch



Electric soldering iron interface



High temperature resistant sponge

Solnde

Heat up quickly
Easy soldering





Product Usage



Model	SLD-936
Power consumption	60W
Body weight	1.95KG
Input power voltage	220VAC \pm 10% 50 HZ
Temperature control range	200-480 ° C / 392 ° F-896 ° F
The output voltage	24VAC
Setting method	Knob adjustment
Welding tip to ground impedance	$<2\Omega$
Welding nozzle to ground voltage	$<5mV$
Temperature stability of soldering iron	$\pm 2^{\circ} C$
Heater	Ceramic heating element
Soldering iron	M-T-I tip

Solnde

High temperature resistant shell

Non-slip thermal insulation silicone protective sleeve



SolInde



positive



side



bottom



back