

PRODUCT DISPLAY



PRODUCT DETAILS

1. Select BST-9900A Screwdriver models are as follows:

 1.2
  T6
  T8

2. Dual-use plastic batch

3,3.5: sucker

4. Open shell paddles



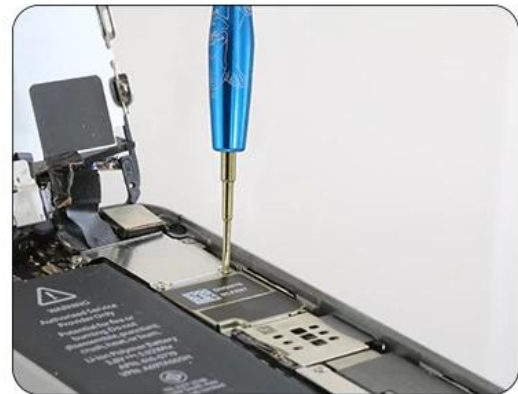
 1.2



 T6



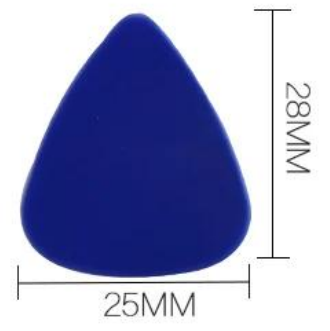
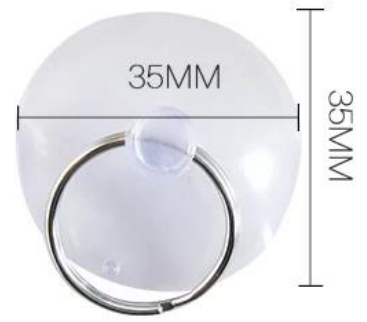
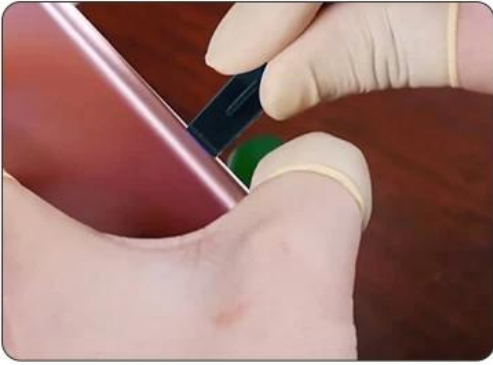
 T8



disassemble internal screw

Feature:

1. Handle pure aluminum alloy with high hardness, good stability.
2. Carved pattern upscale, beautiful, non-slip effect.
3. End cap rotating flexible, improve work efficiency.
4. Perfect match to meet a variety of needs.
5. Batch rod using high quality imported steel manufacturing through the whole heat treatment, Titanium plating, to ensure product quality is good, durable.



PRODUCT PHOTOGRAPH



PRODUCT PACKAGING

WEIGHT:80G



FRONT



BACK



- . 1
- . 2
- . 3
- . 4 s2
- . 5.