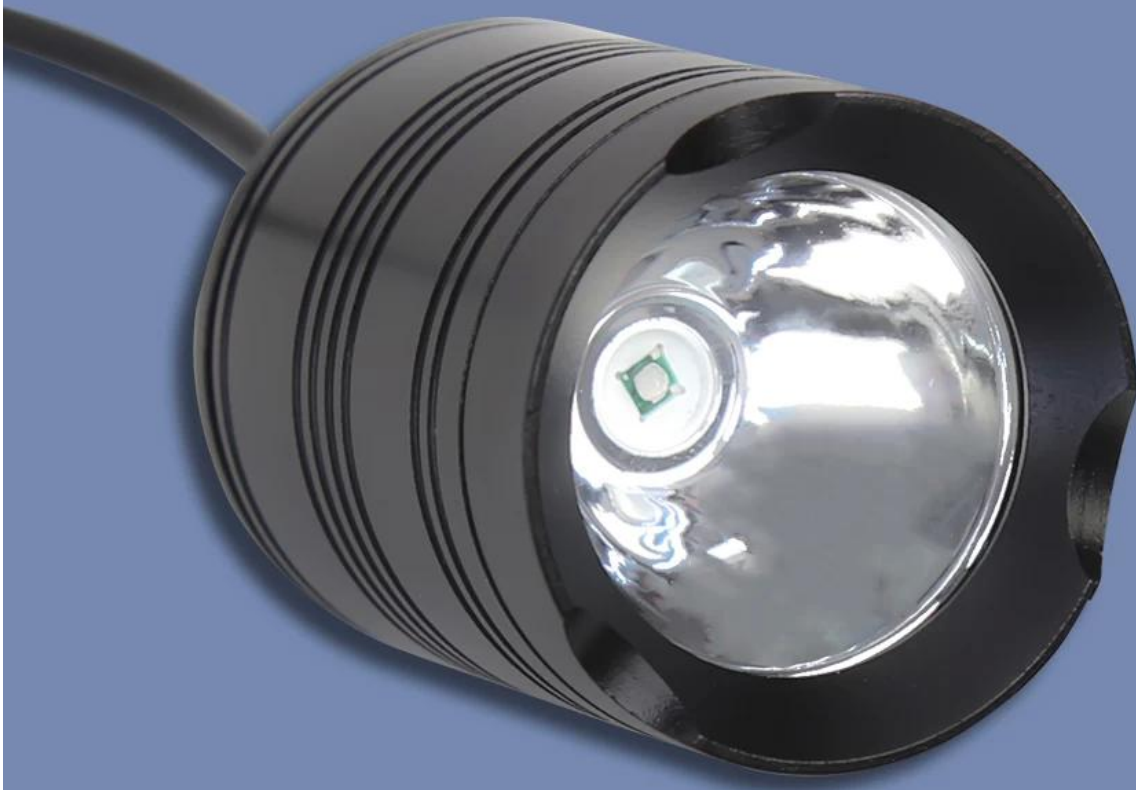


SPECIAL FOR CURING

LED CURING LIGHT

HIGH QUALITY LAMP BEADS | HIGH POWER | FAST CURING





HIGH QUALITY LAMP BEADS



FAST CURING



WIDELY USED



SENSOR SWITCH



ALUMINUM ALLOY MATERIAL



EASY TO CARRY

PRODUCT PARAMETERS

CURING
LAMP



| | |
|---------------------------|-------------------------|
| PRODUCT NAME | Green oil curing lamp |
| PRODUCT MODEL | BST-9147 |
| LAMP BEADS | LED lamp beads |
| BODY MATERIAL | Aluminum alloy material |
| PRODUCT NET WEIGHT | 104g |
| PRODUCT SIZE | 54mm×45mm |
| LINE LENGTH | 1m |

Note: due to errors in manual measurement, please refer to the actual product

▼ PRODUCT ADVANTAGES

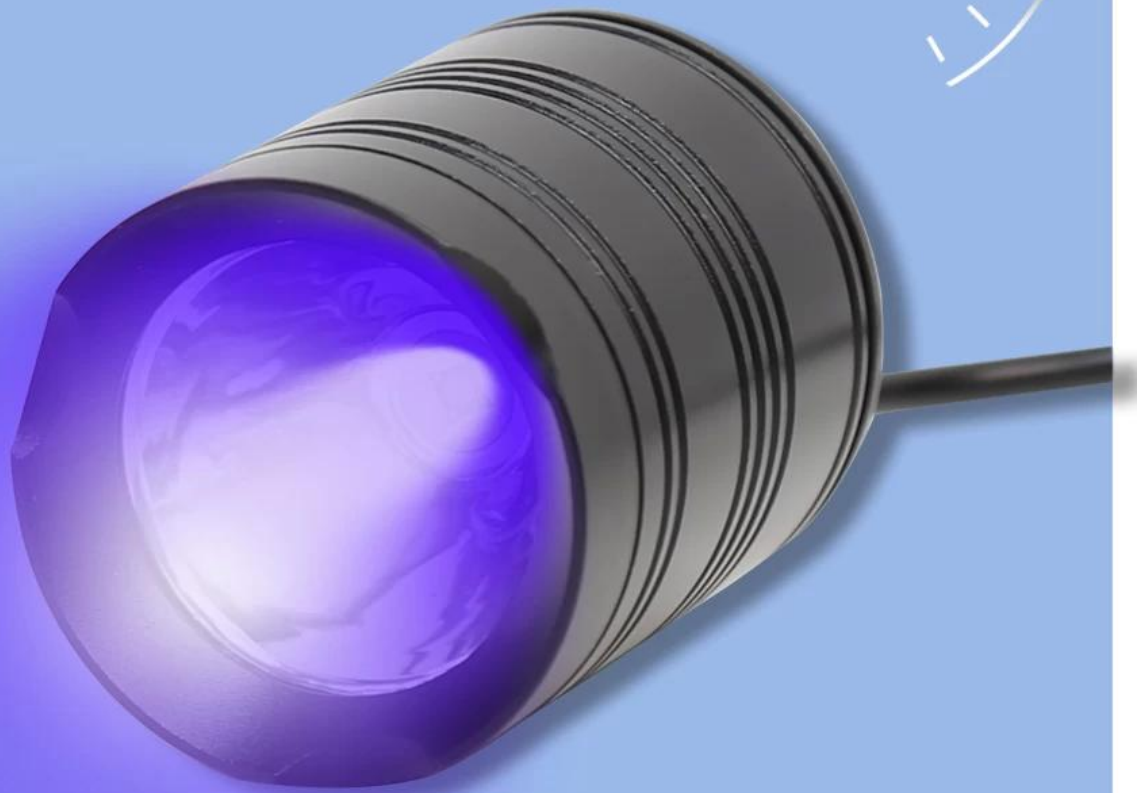
LED lamp beads, high power, low energy consumption, fast curing, easy to use, fast without waiting. High-quality aluminum alloy material, strong and durable. USB power supply interface, compatible with a variety of devices and easy to use (computer, power bank and other equipment)

HIGH POWER FAST CURING

CURING
LAMP



10 seconds fast curing
low power consumption



SENSOR SWITCH

CURING
LAMP

Reduce shock to switch
Extend switch life



USB INTERFACE

CURING
LAMP



Compatible with multiple devices
Applicable to a wide range of scenarios



WIDE APPLICATION

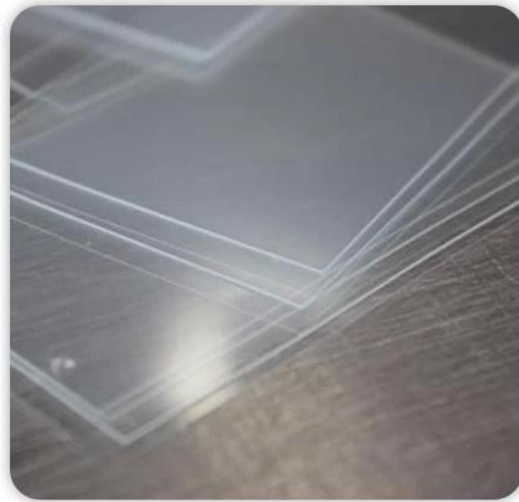
CURING
LAMP



Suitable for furniture installation, vehicle maintenance
Computer assembly, equipment assembly, etc.



BANKNOTE VERIFICATION



RESIN GLUE CURING



FLUORESCENT AGENT DETECTION



UV GLUE CURING

01



LAMP BEADS

—
led lamp beads, high power
Safe, stable and long life

ALUMINUM ALLOY

—
High hardness
strong and durable
safe to use

02



03



EASY TO CARRY

—
Small and convenient
the size of one hand

PRODUCT SIZE

CURING
LAMP



net weight: 104g



Note: due to errors in manual measurement, please refer to the actual product