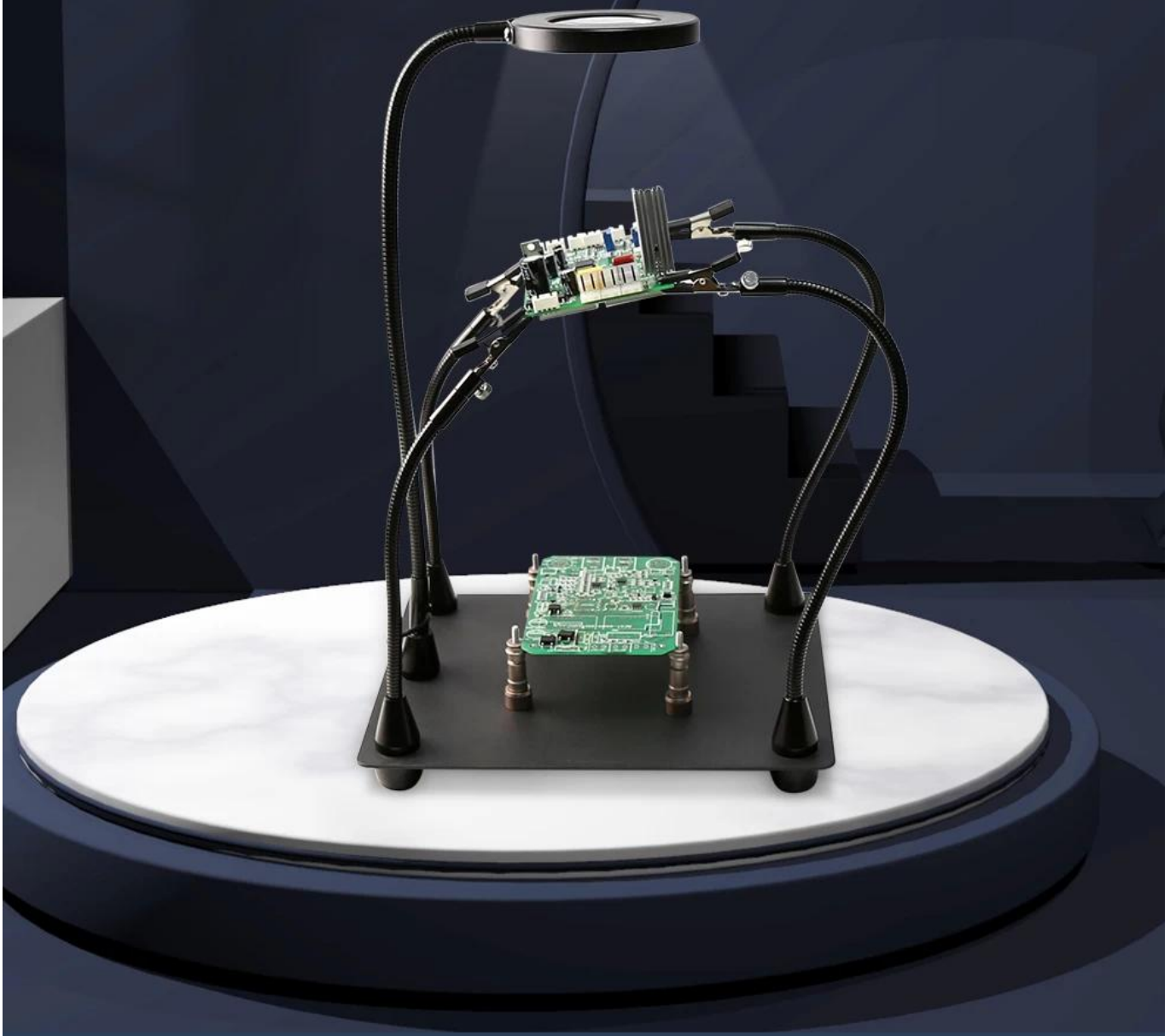


Desk lamp maintenance magnifier

3x magnification Non-slip rubber sleeve

Does not damage the circuit board Metal universal tube

LED cold/warm light adjustable



PRODUCT INFORMATION

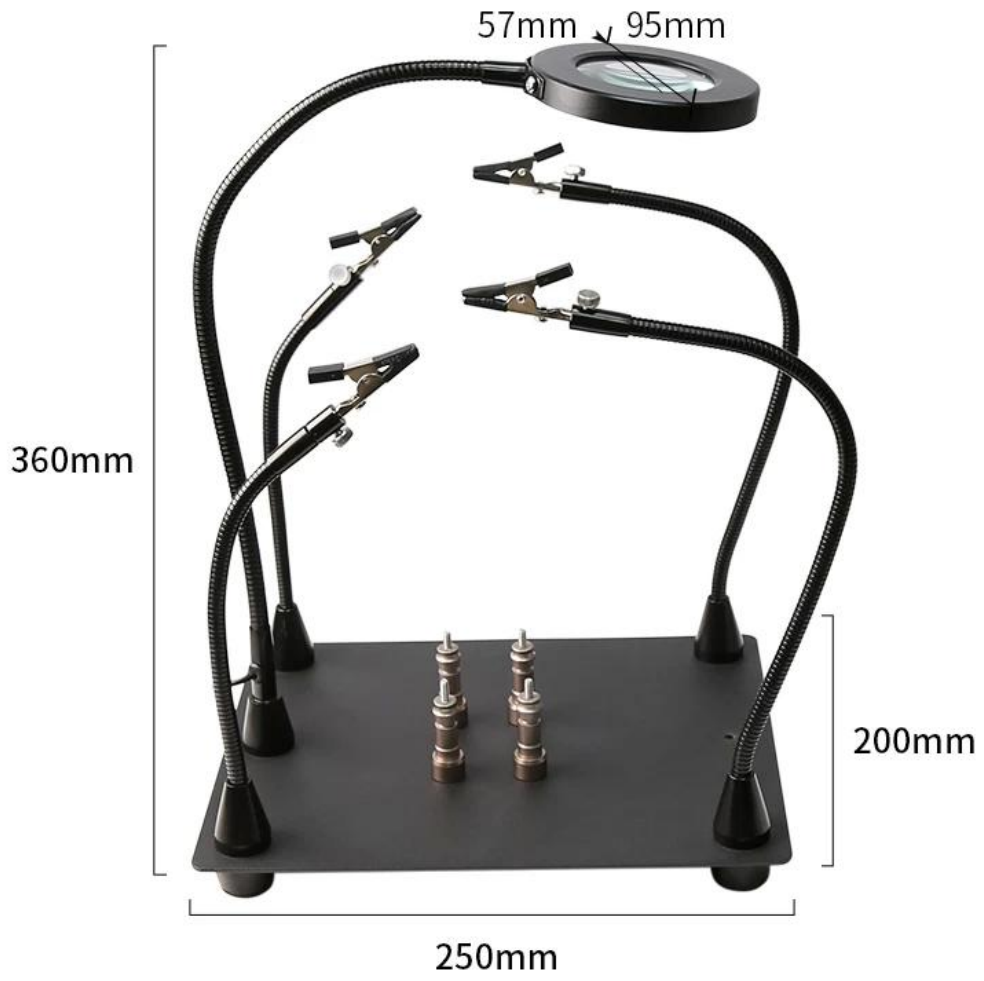


PRODUCT NUMBER:	BST-168L
PRODUCT MATERIAL:	STEEL/ACRYLIC OPTICAL LENS/MAGNETIC SHEET
PACKING:	PP BAG, FOAM BAG, COLOR BOX
PRODUCT WEIGHT:	NET WEIGHT 1585G
MIRROR SIZE:	57MM
MAGNIFICATION:	3 TIMES
LIGHT SWITCH CABLE LENGTH:	153CM
PACKAGE DIMENSIONS:	270X210X42MM
WORKING DESK SIZE:	250X200X360MM

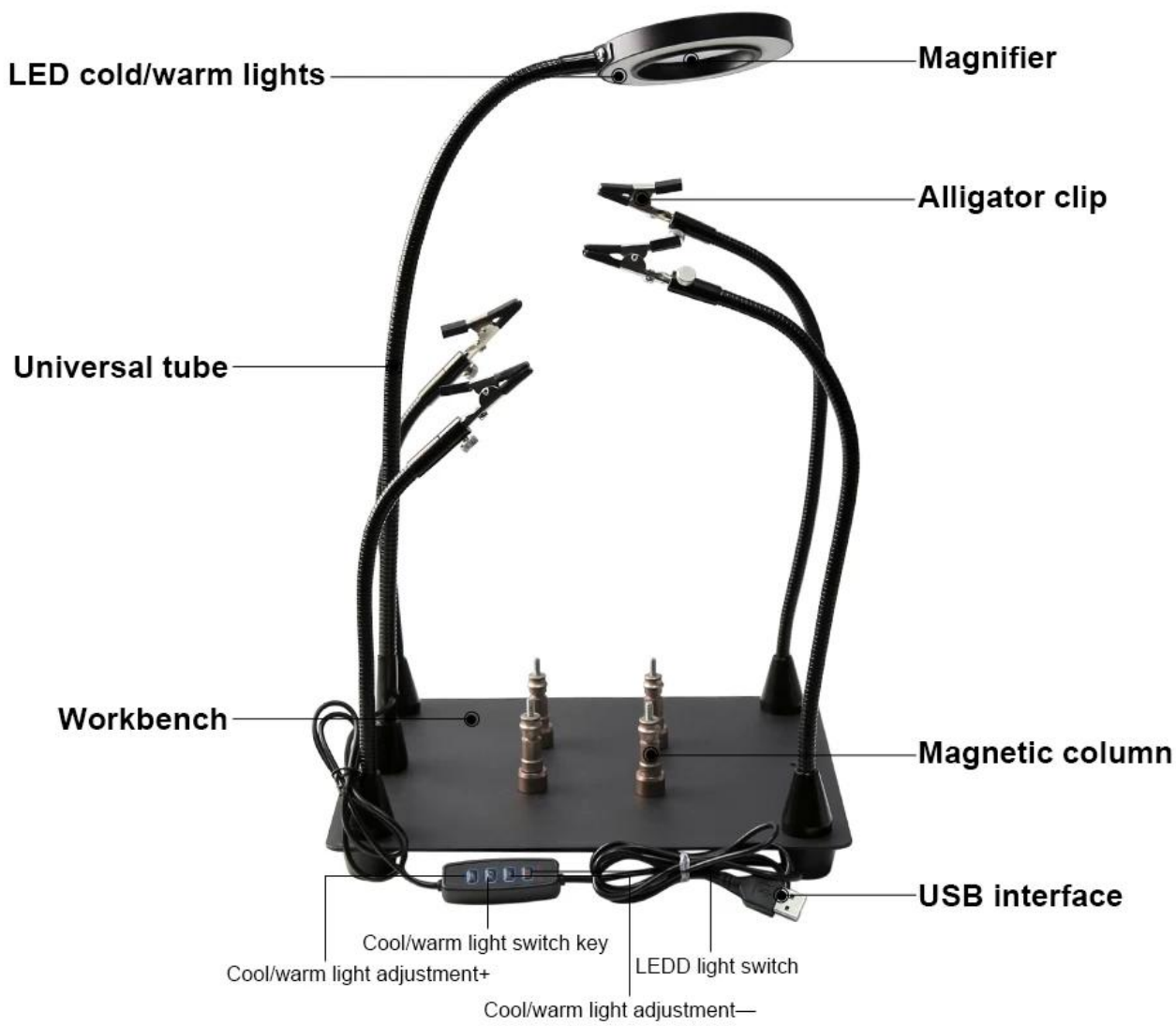
PRODUCT SIZE

—

⋮



PRODUCT DISPLAY

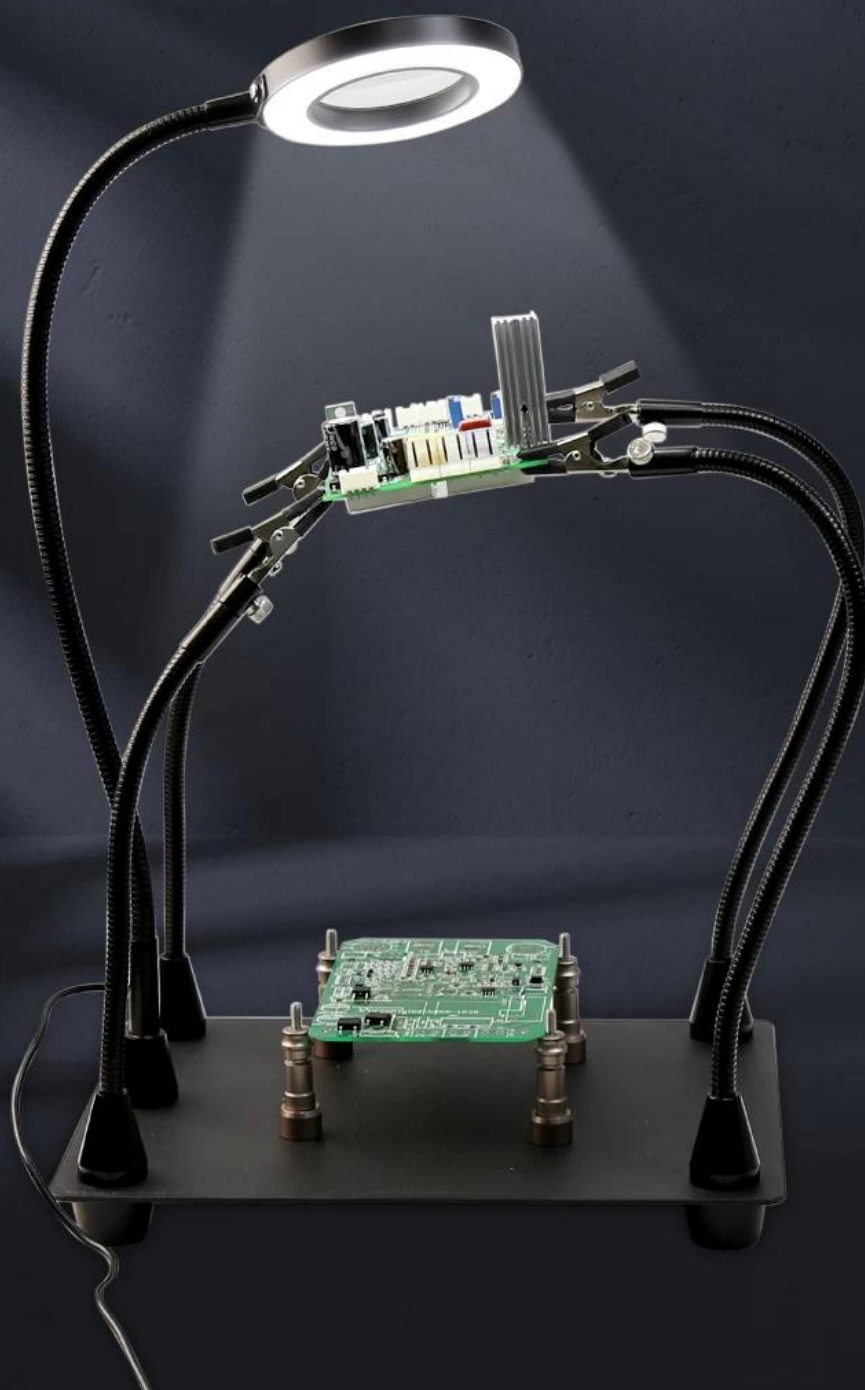


LED light switch cable total length:153CM



LED heating and cooling light adjustable

With 10-level LED cold/warm light,
you can adjust it according to your usage



Maintenance welding is more precise

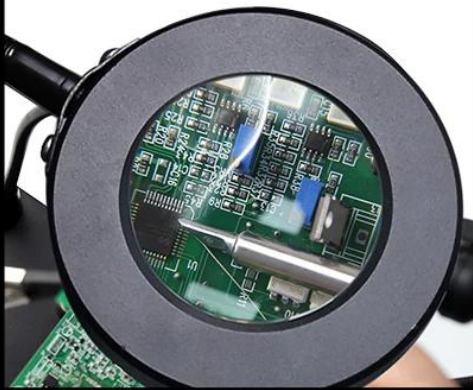
Repair • Test • assemble



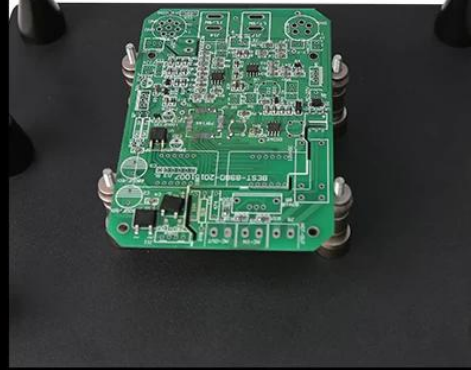
PRODUCT DETAILS



HD 3x magnifying glass



Magnetic post for maintenance board



Metal universal arm
360° adjustable at will



Non-slip rubber sleeve does not hurt the circuit board



Comes with LED cold/warm lights



LED light switch, 10 levels of light
+/- adjustable, cool/warm light
toggle switch



Multipurpose magnifying glass

...

