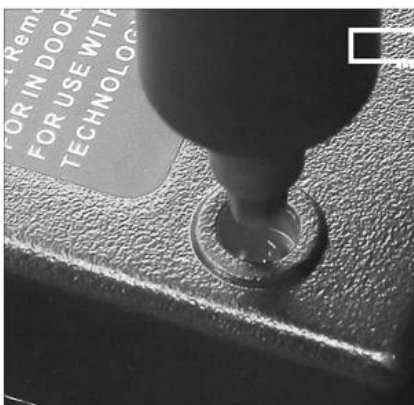


- 1 符合 ISO 9001 认证
- 2 符合 CE, FCC, RoHS, REACH 等国际标准
- 3 符合 AAA 级环保标准 8 项有害物质检测合格。
- 4 符合 0.12 / 3N.m 扭力精度要求
- 5 符合 electroinc 环保标准 18 项 S2 有害物质检测合格。
- 6 符合 IP, RC 等认证, 符合 CE 认证要求

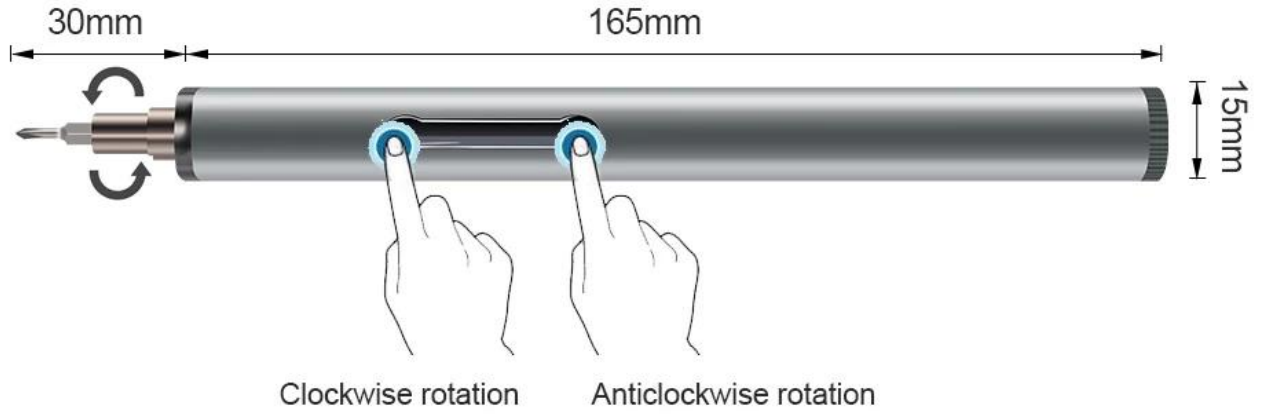
品牌 :
 规格 : 2 * AAA 规格
 扭力 : 0.2-2N / m
 转速 : 160R / min (可调)
 适用工具 : PH000, PH0, PH2, SL1.0, SL2.0, SL3.0, T5, T6, T8, P2, P5, P6, H2.5, H3, SQ0, Y2.5, U3.0,
 规格 3.0
 材料 : S2 钢
 尺寸 : 16X175mm / 0.63X6.89 英寸 (D * L)
 重量 : 210 g

Cell phone, computer, glasses, camera,
watch, earphone, radio, meet most daily maintenance



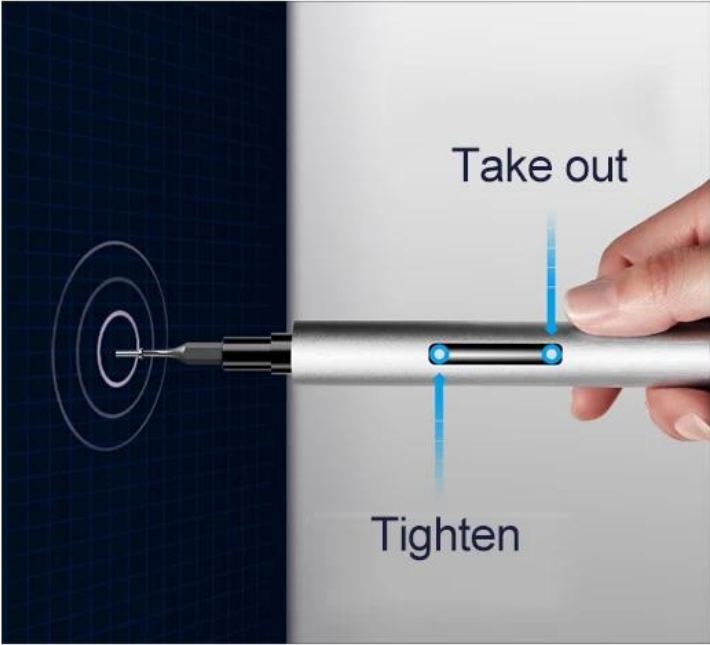
PRODUCT SIZE

Electric screwdriver



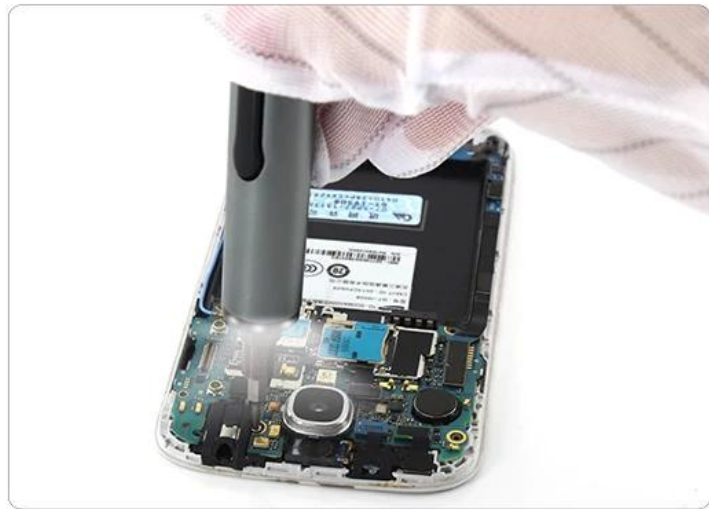
PRODUCT DETAILS







LED lighting during work



⊕	PH000	PH00	PH0	PH1	PH2
⊛	T5	T6	T8		
⊖	1.5	2.0	3.0		
⦿	2.5	3.0			
★	0.8	1.5	1.2		
U	3.0				
Y	2.5				
▲	3.0				
■	SQ0				

PRODUCT PACKAGING

