

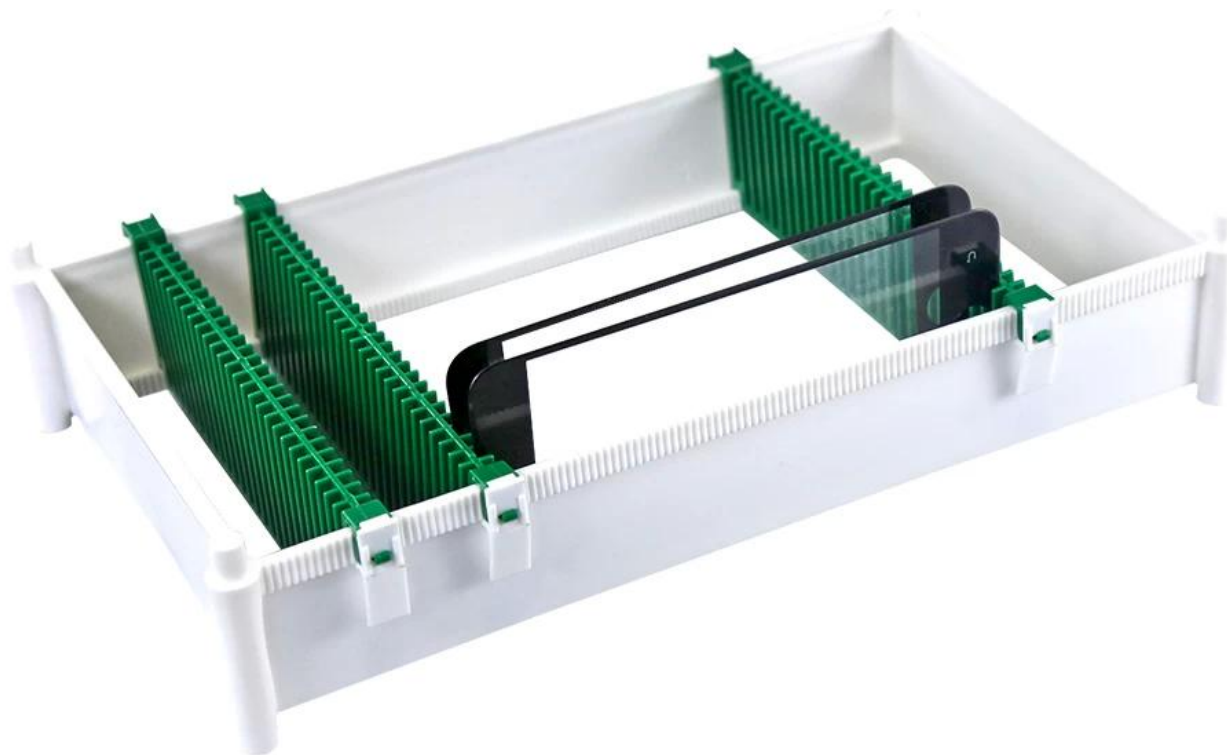
1. 此 種 型 號 之 電 池 僅 能 用 於 此 種 型 號 之 電 池 。

2. 100 % 電 量 充 滿 後 再 充 。

3. 此 種 型 號 之 電 池 僅 能 用 於 此 種 型 號 之 電 池 。

## PRODUCT DISPLAY

---



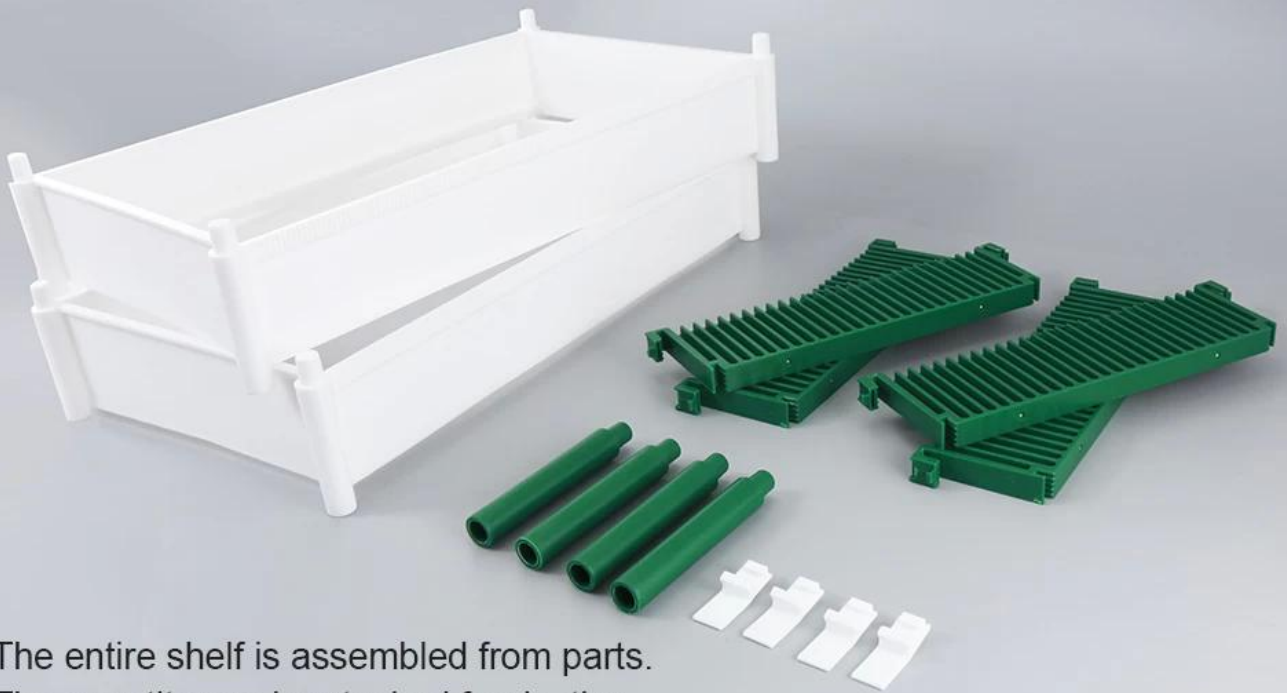
## PRODUCT SIZE



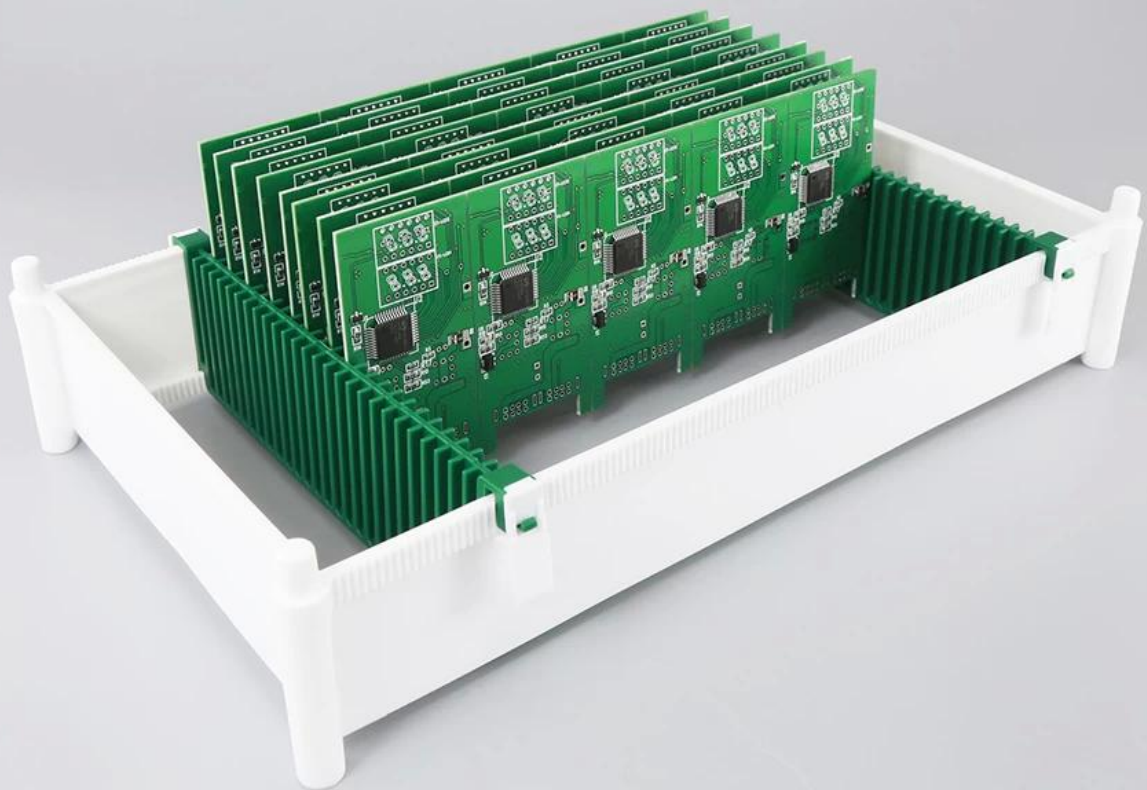
## PRODUCT DETAILS



Brand:	BST	Name:	LCD glass storage rack
Type:	Combination type	One layer size:	285*170*60mm
Material:	Green:ABS White:PP	One layer weight:	200g
Feature:			
1: Combined type LCD screen storage rack.			
2: Free combination, easy disassembly, 50 card slots each layer.			
3: Adjustable card slot can fit all kinds of mobile phone screen.			



The entire shelf is assembled from parts.  
The quantity can be stacked freely, the  
combination is quick, and the disassembly is convenient



Three rows of card slots on each floor can be moved freely. Horizontally placed vertically, adapt to all mobile phone screen sizes







Wide range of uses  
Suitable for all mobile phone  
screens on the market, with  
at least 50 screens per layer